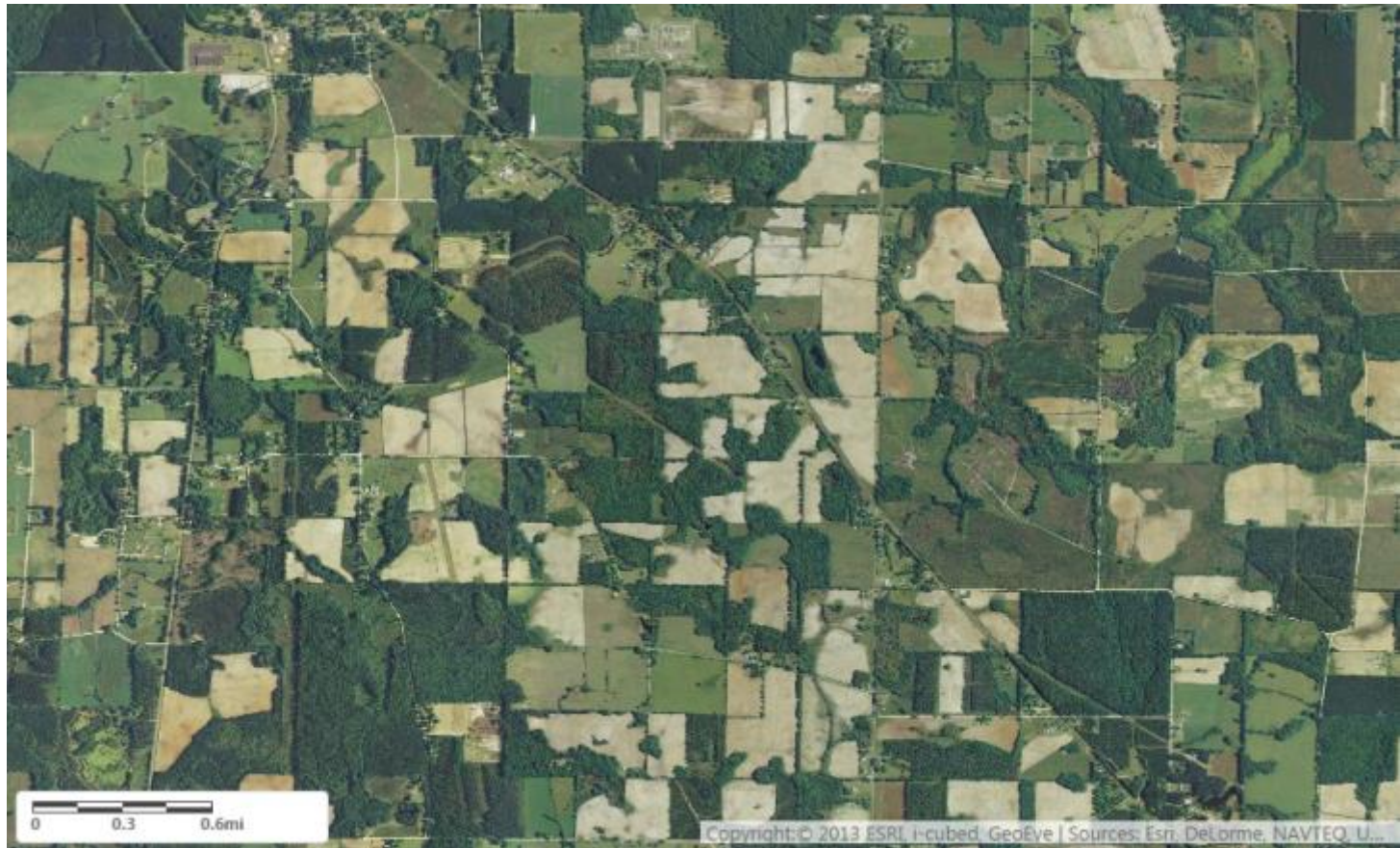
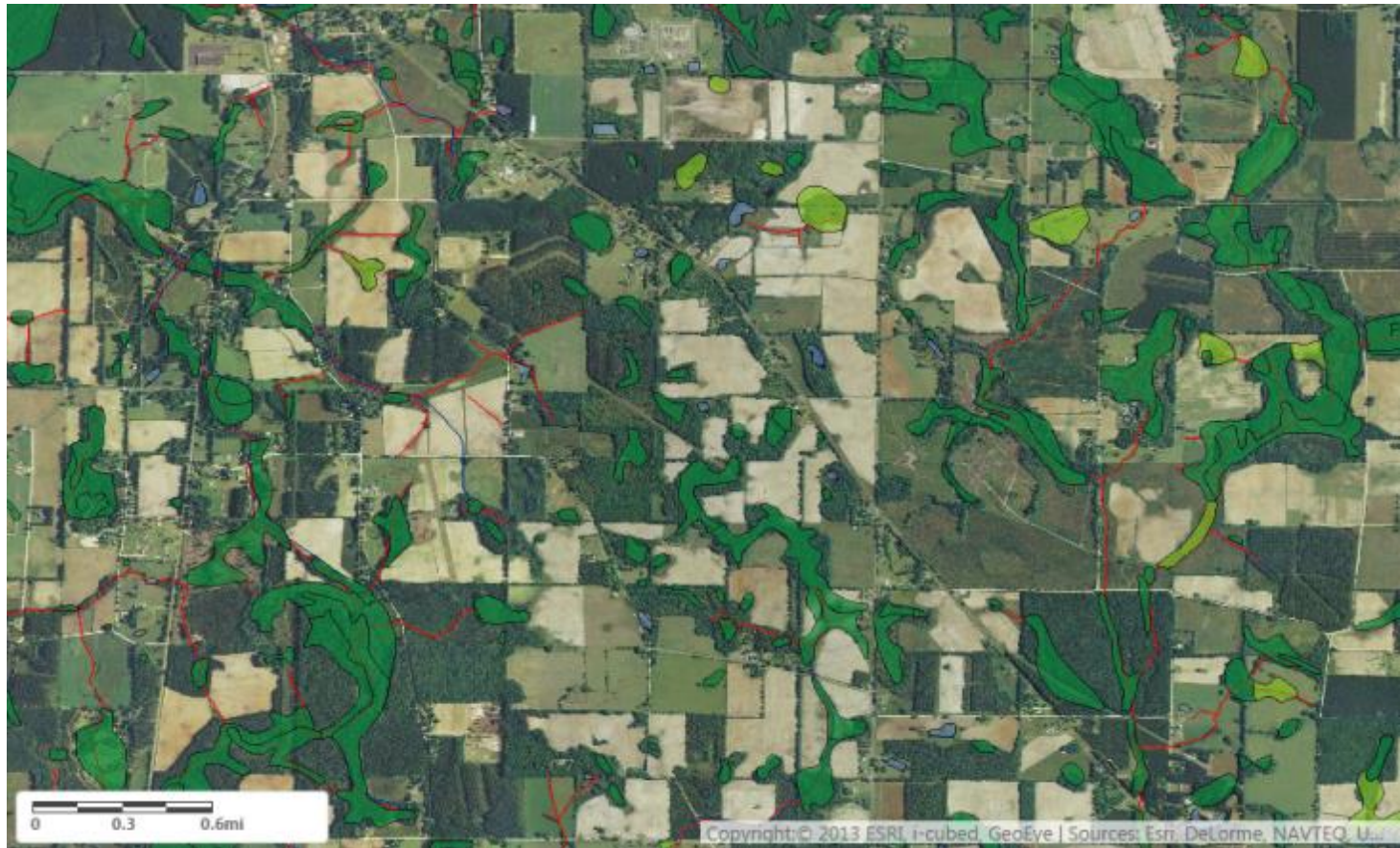


“Waters of the U.S.” in Florida Farmland

Maps by Geosyntec
Analysis by American Farm Bureau Federation

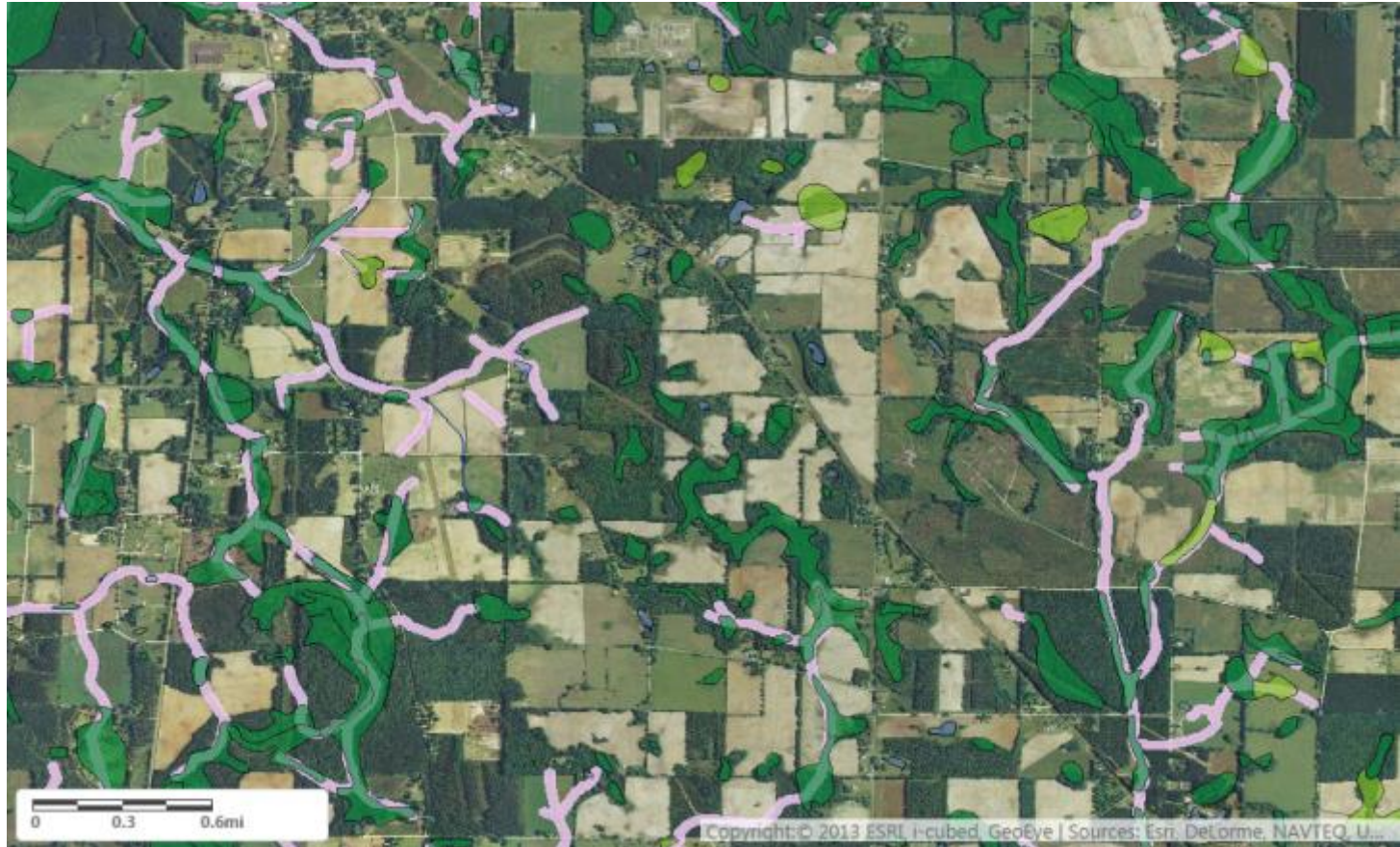


Area of focus is near Campbellton, Florida in Jackson County.



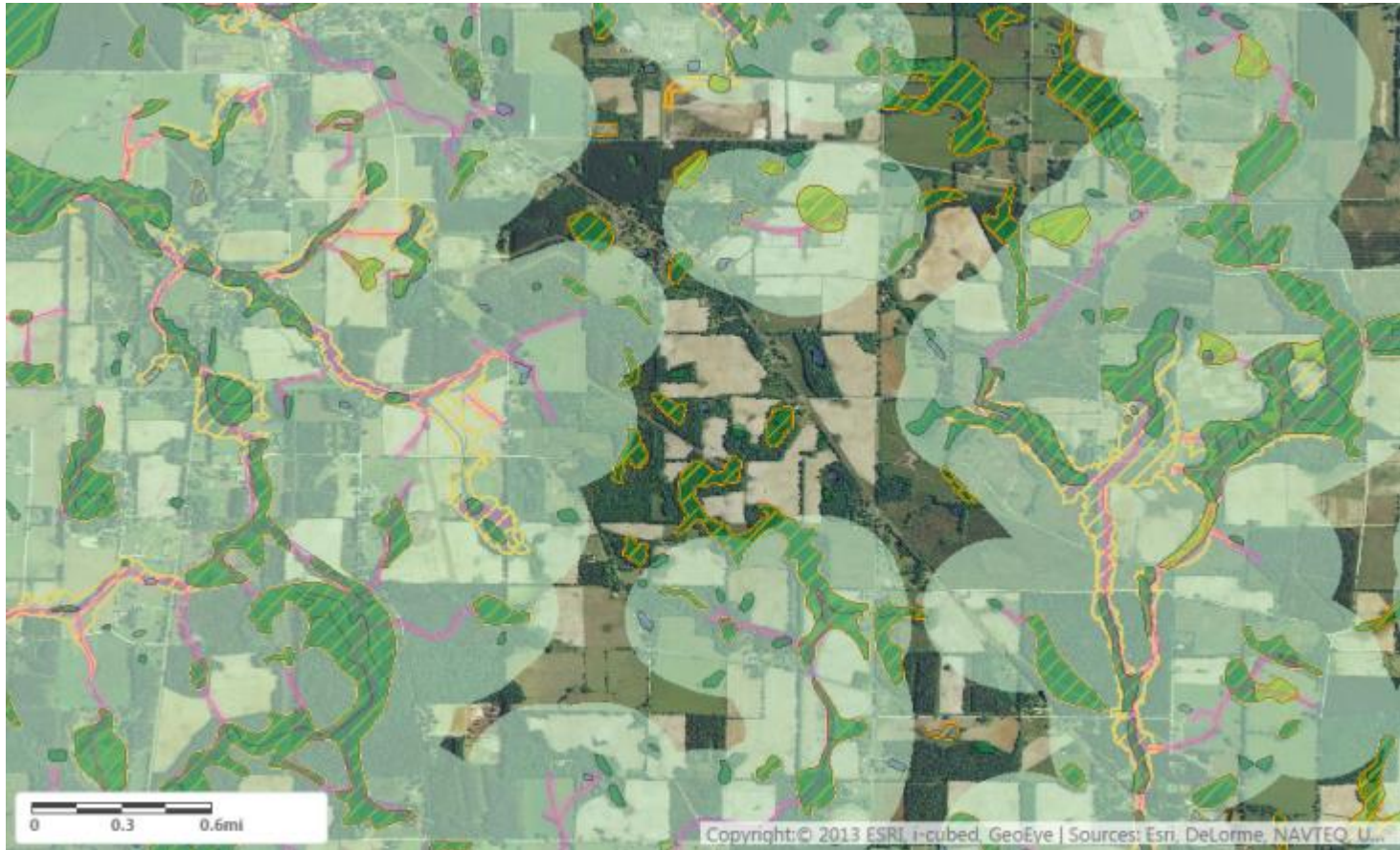
Automatically Regulated “Tributaries”

Perennial, intermittent and **ephemeral** tributaries and adjacent wetlands all deemed jurisdictional without further analysis. (Under prior rules, only perennial and intermittent tributaries were jurisdictional without case-by-case analysis.) Ditches also regulated if “excavated in” or “relocated” a tributary. This map does not show smaller ditches that may be jurisdictional. (Note: light blue shapes designate freshwater ponds and green shapes designate wetlands.)



Automatically Regulated Adjacent Waters

Includes all “waters”—including wetlands—that lie even partially within a 100-foot buffer (pink shading) around all perennial, intermittent and ephemeral streams.



Automatically Regulated Adjacent Waters

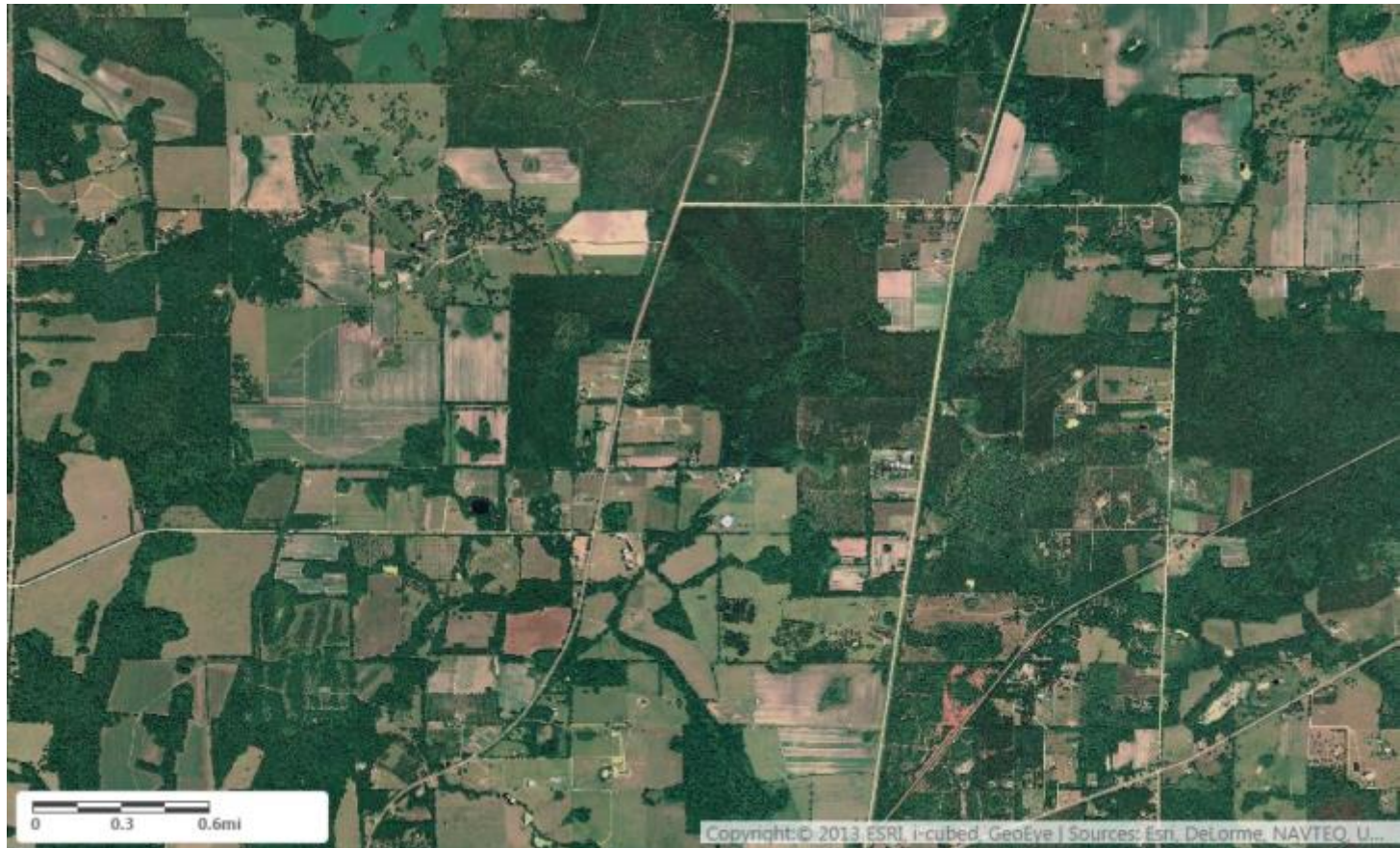
Includes all “waters”—including wetlands—where any part is within the 100-year floodplain and not more than 1,500 feet from a tributary. Light green shading shows the 1,500-foot zone and hash marks show the known FEMA 100-year flood zone (which may be out-of-date or may not be relied upon by the Corps). **Absent definitive flood zone information from the Corps, any water partially within the light green shading is a possible “adjacent water.”**



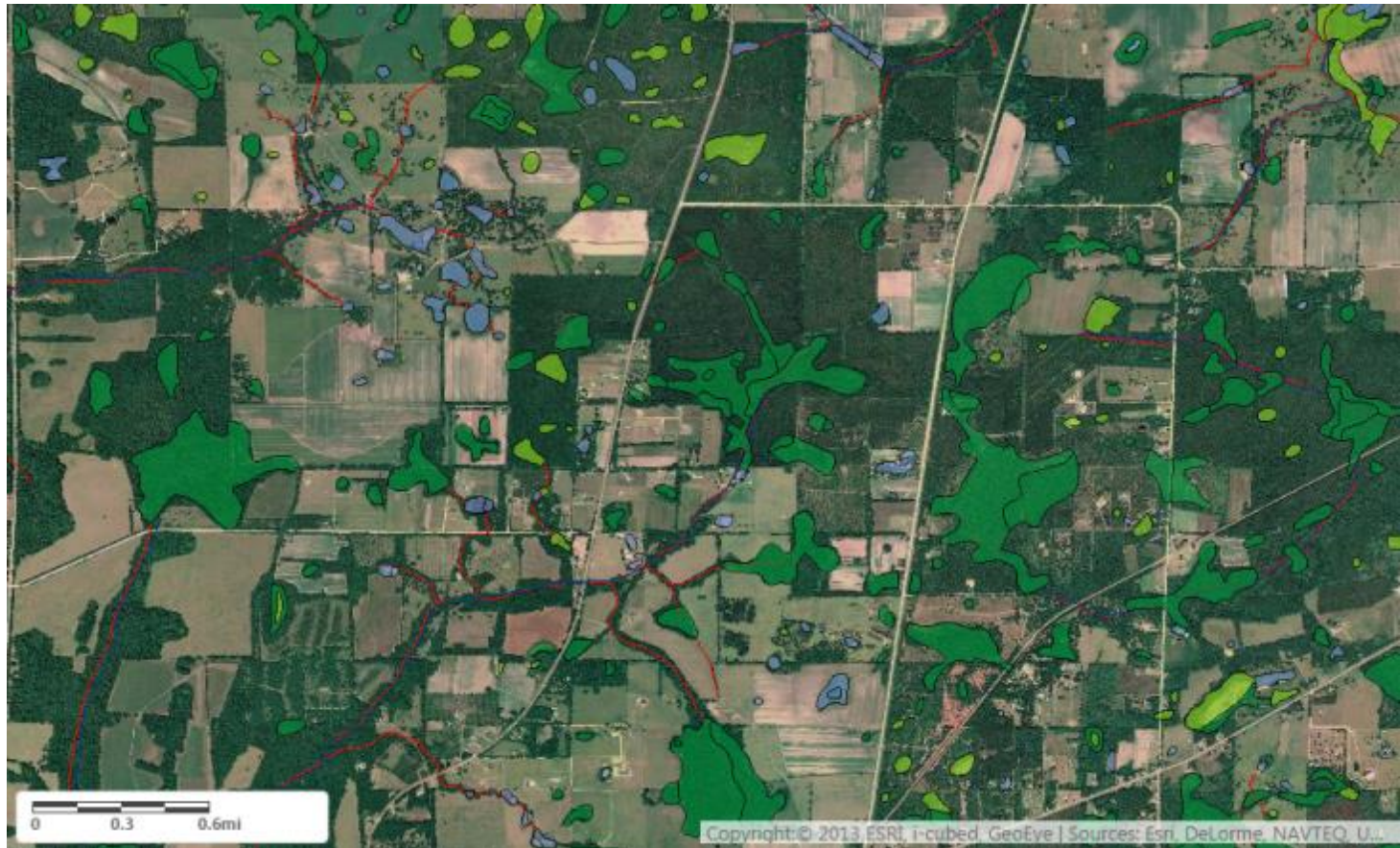
Maybe Regulated “Significant Nexus” Waters

Water/wetlands even partially within 4,000 feet (about $\frac{3}{4}$ mile) of a tributary can be regulated on a “significant nexus” finding. Orange shading shows land outside the possible adjacency zone but within the 4,000 foot zone.

Even without mapping of all jurisdictional ditches, the area of possible regulation covers the entire map.

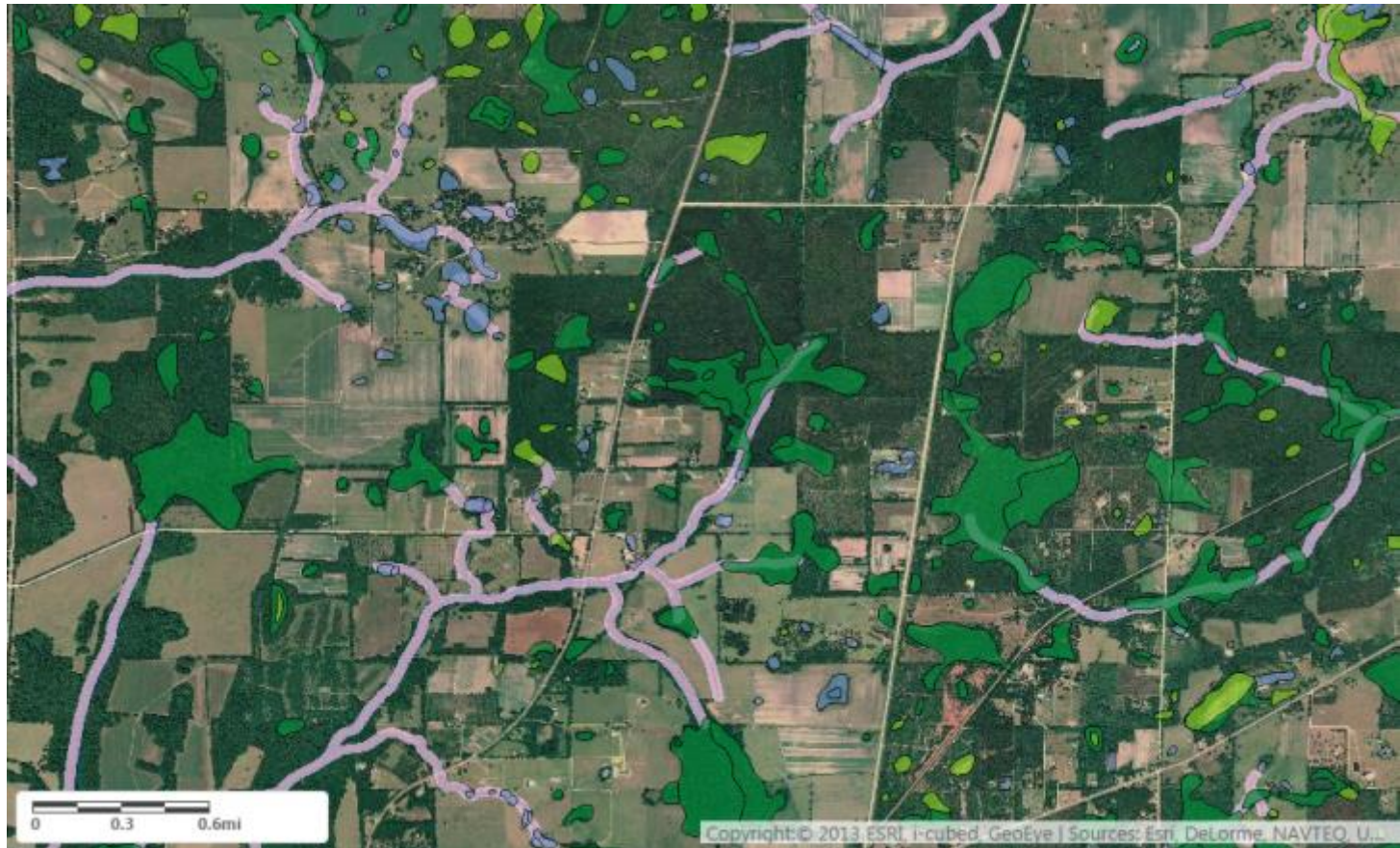


Area of focus is near La Crosse, Florida in Alachua County.



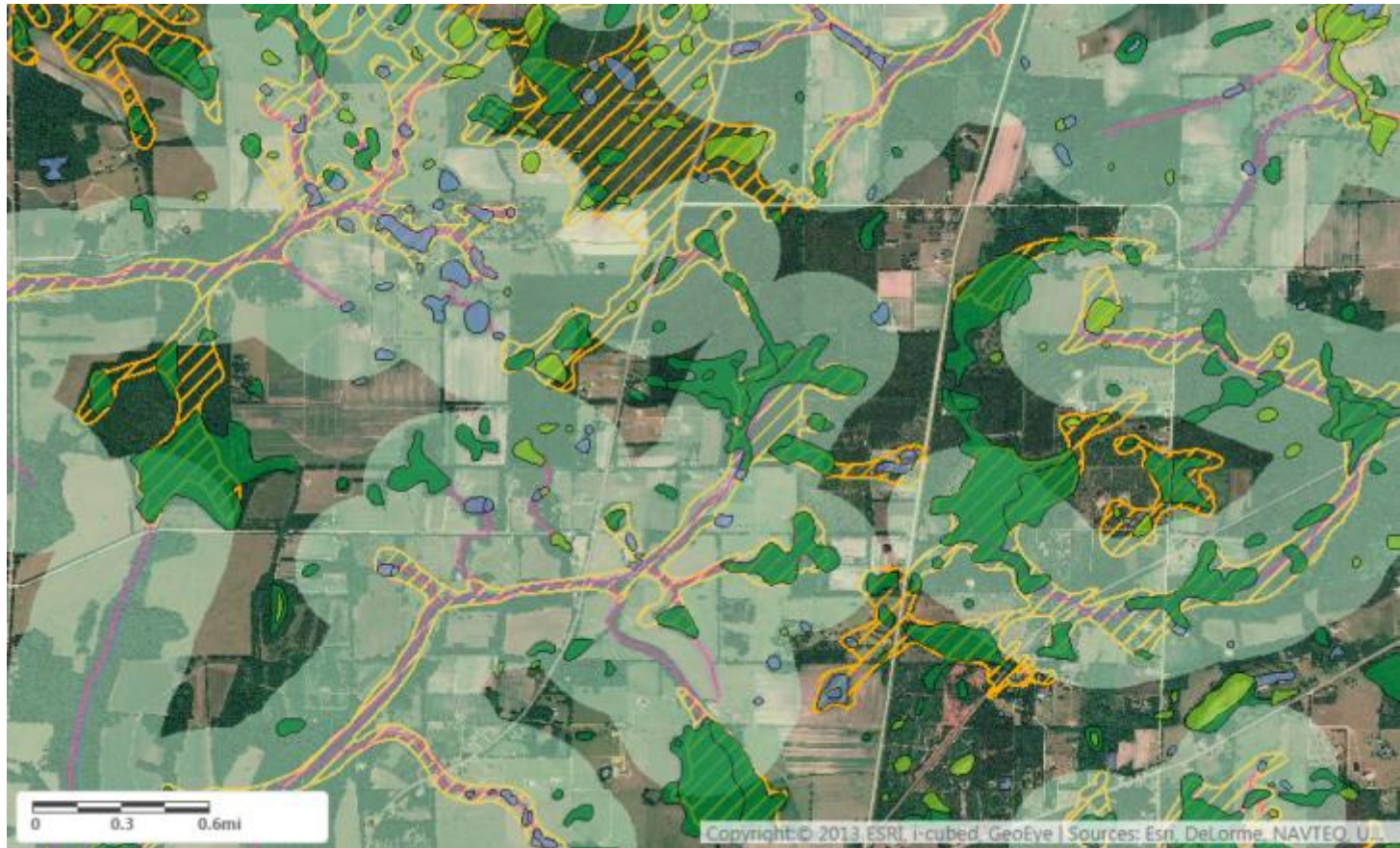
Automatically Regulated “Tributaries”

Perennial, intermittent and **ephemeral** tributaries and adjacent wetlands all deemed jurisdictional without further analysis. (Under prior rules, only perennial and intermittent tributaries were jurisdictional without case-by-case analysis.) Ditches also regulated if “excavated in” or “relocated” a tributary. This map does not show smaller ditches that may be jurisdictional. (Note: light blue shapes designate freshwater ponds, green shapes designate wetlands.)



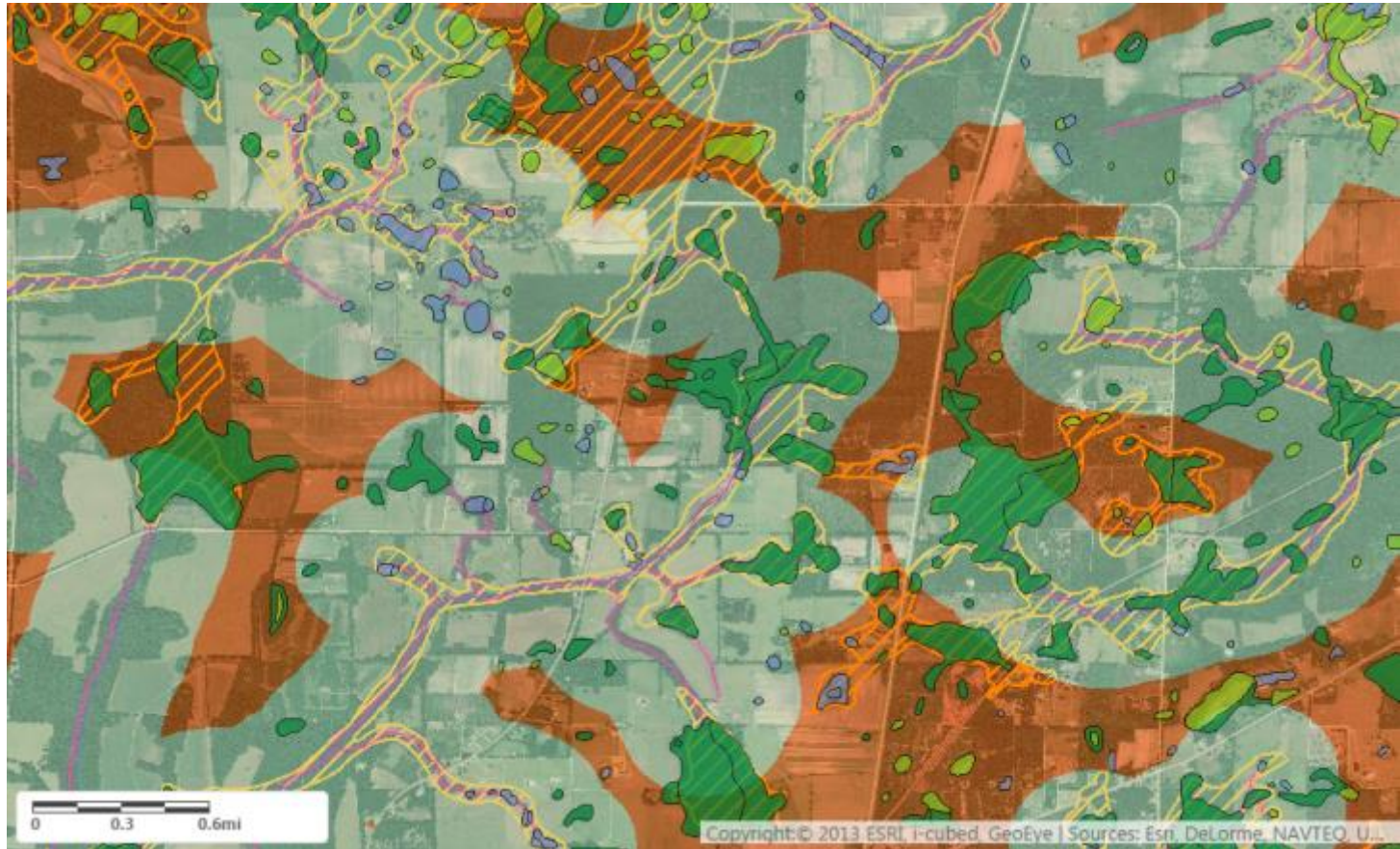
Automatically Regulated Adjacent Waters

Includes all “waters”—including wetlands—that lie even partially within a 100-foot buffer (pink shading) around all perennial, intermittent and ephemeral streams.



Automatically Regulated Adjacent Waters

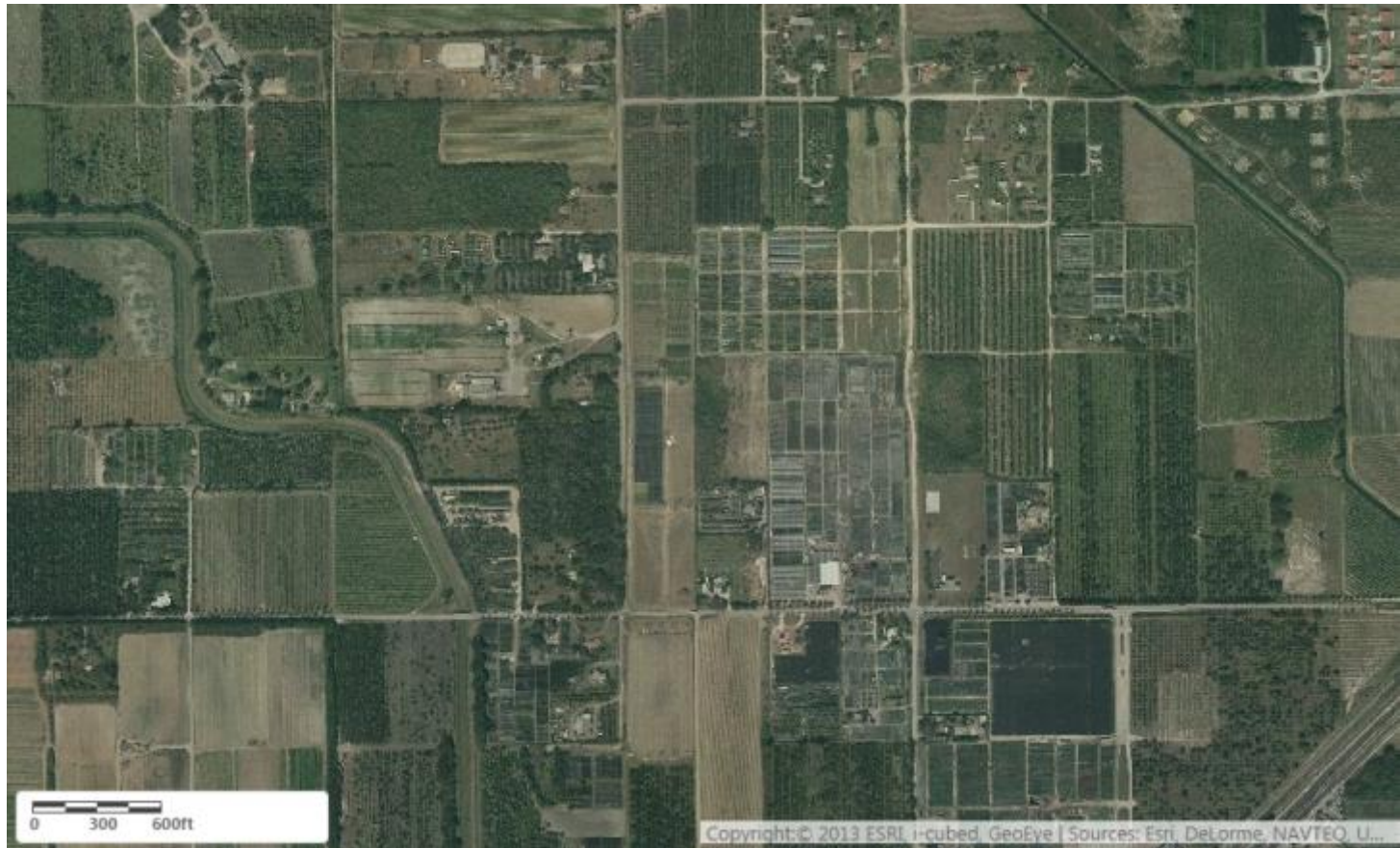
Includes all “waters”—including wetlands—where any part is within the 100-year floodplain and not more than 1,500 feet from a tributary. Light green shading shows the 1,500-foot zone and hash marks show the known FEMA 100-year flood zone (which may be out-of-date or may not be relied upon by the Corps). **Absent definitive flood zone information from the Corps, any water partially within the light green shading is a possible “adjacent water.”**



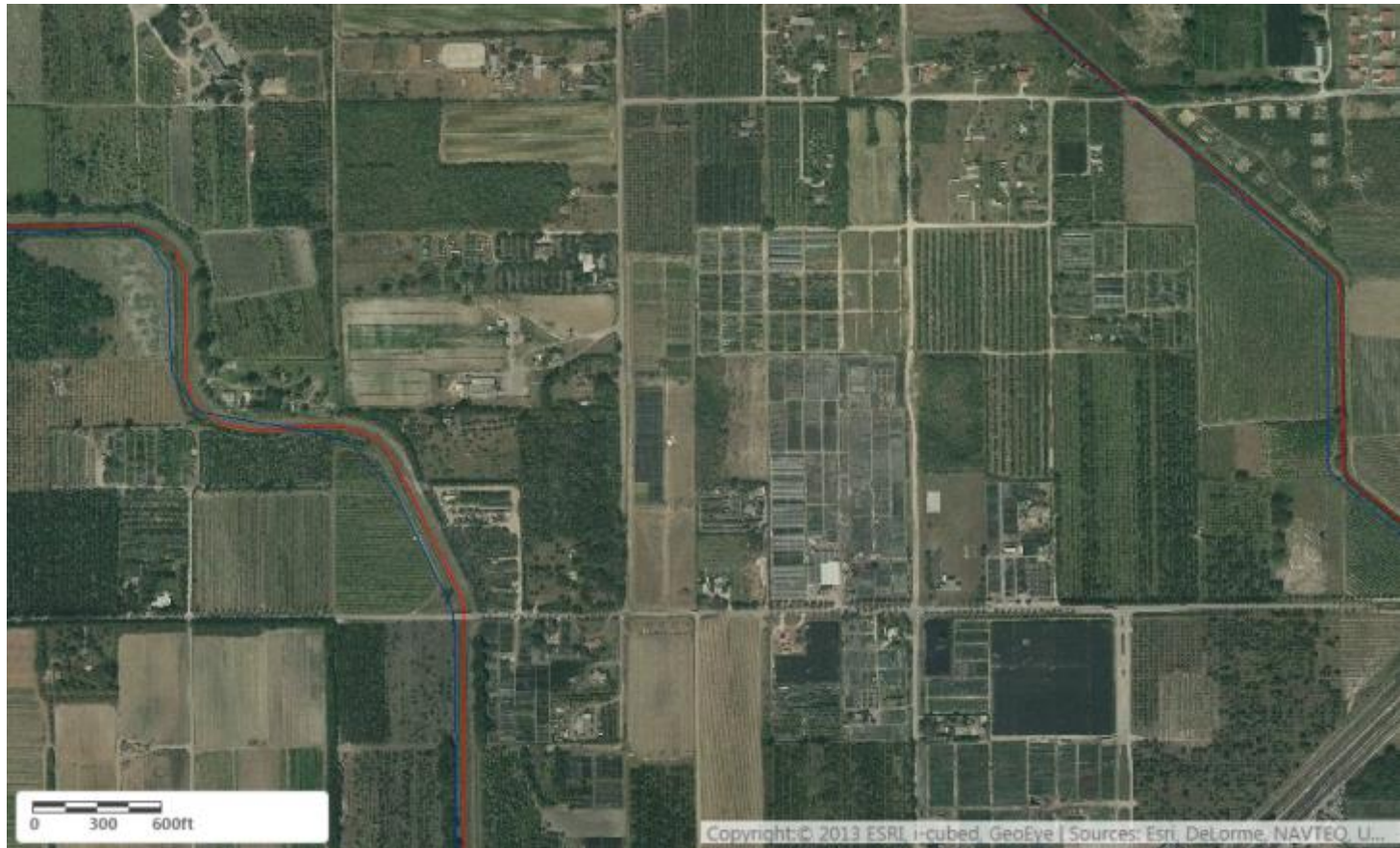
Maybe Regulated “Significant Nexus” Waters

Water/wetlands even partially within 4,000 feet (about $\frac{3}{4}$ mile) of a tributary can be regulated on a “significant nexus” finding. Orange shading shows land outside the possible adjacency zone but within the 4,000 feet zone.

Even without mapping around all jurisdictional ditches, the area of possible regulation covers the entire map.



Area of focus is in Miami-Dade County.



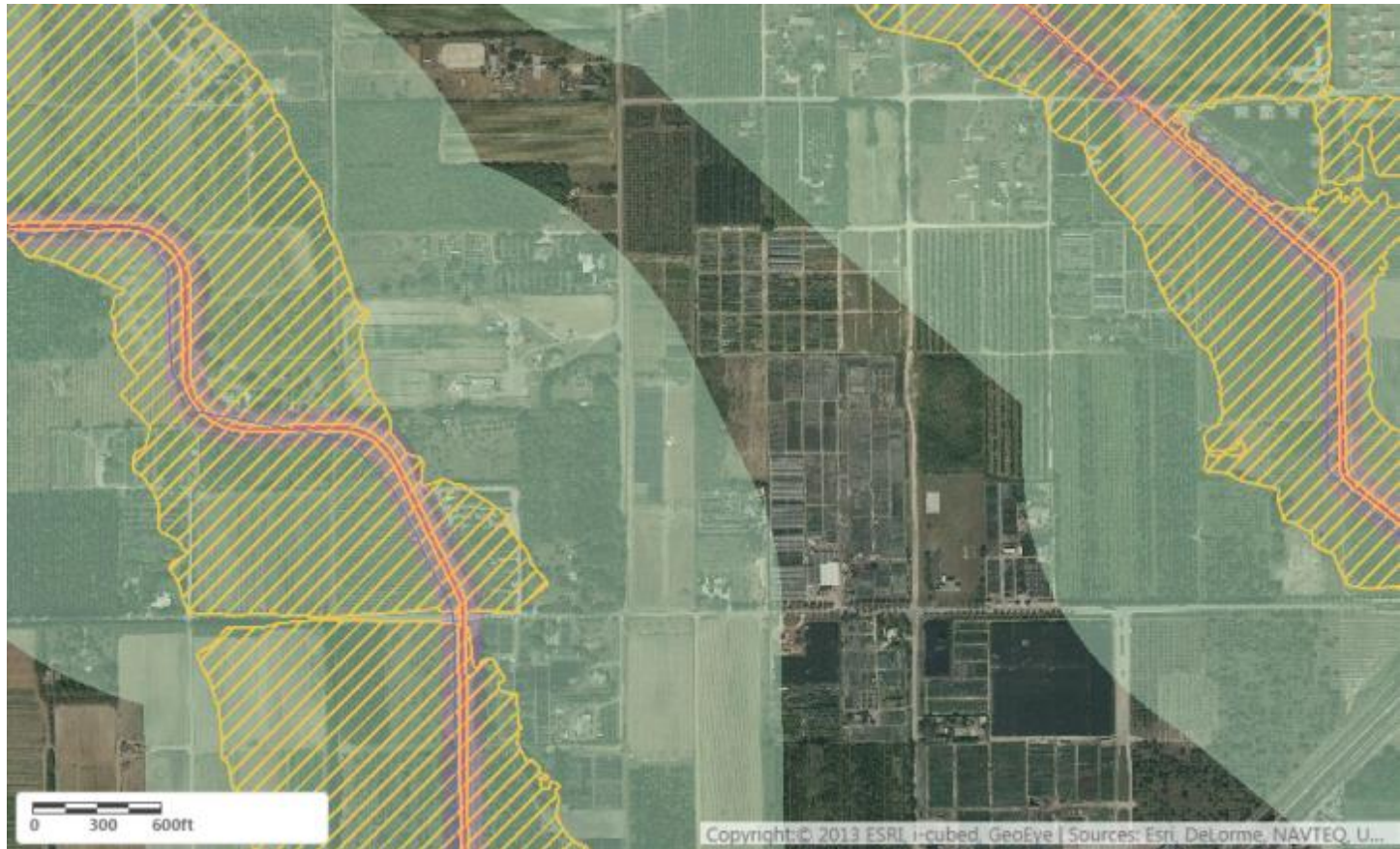
Automatically Regulated “Tributaries”

Perennial, intermittent and **ephemeral** tributaries and adjacent wetlands all deemed jurisdictional without further analysis. (Under prior rules, only perennial and intermittent tributaries were jurisdictional without case-by-case analysis.) Ditches also regulated if “excavated in” or “relocated” a tributary. This map does not show smaller ditches that may be jurisdictional.



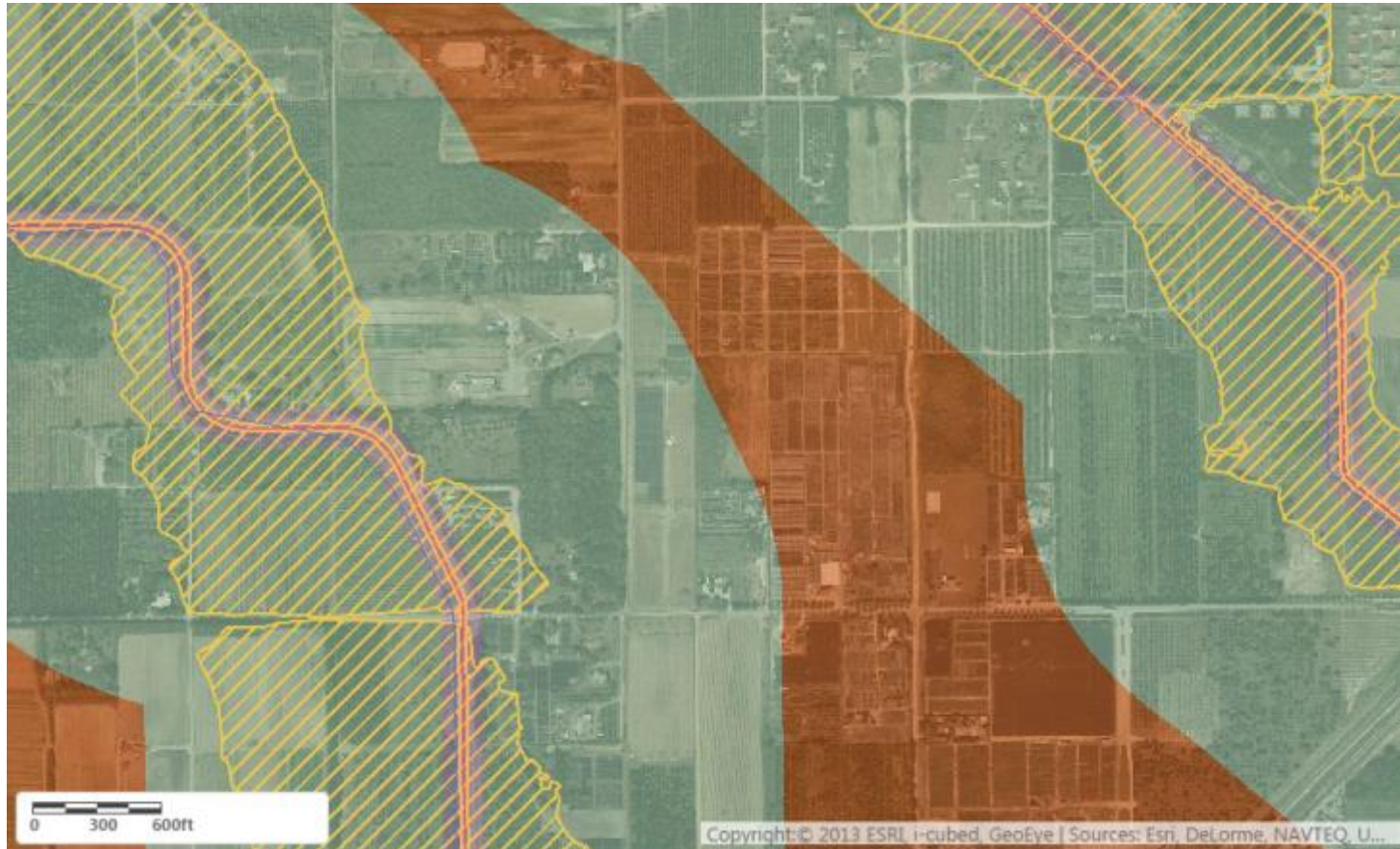
Automatically Regulated Adjacent Waters

Includes all “waters”—including wetlands—that lie even partially within a 100-foot buffer (pink shading) around all perennial, intermittent and ephemeral streams.



Automatically Regulated Adjacent Waters

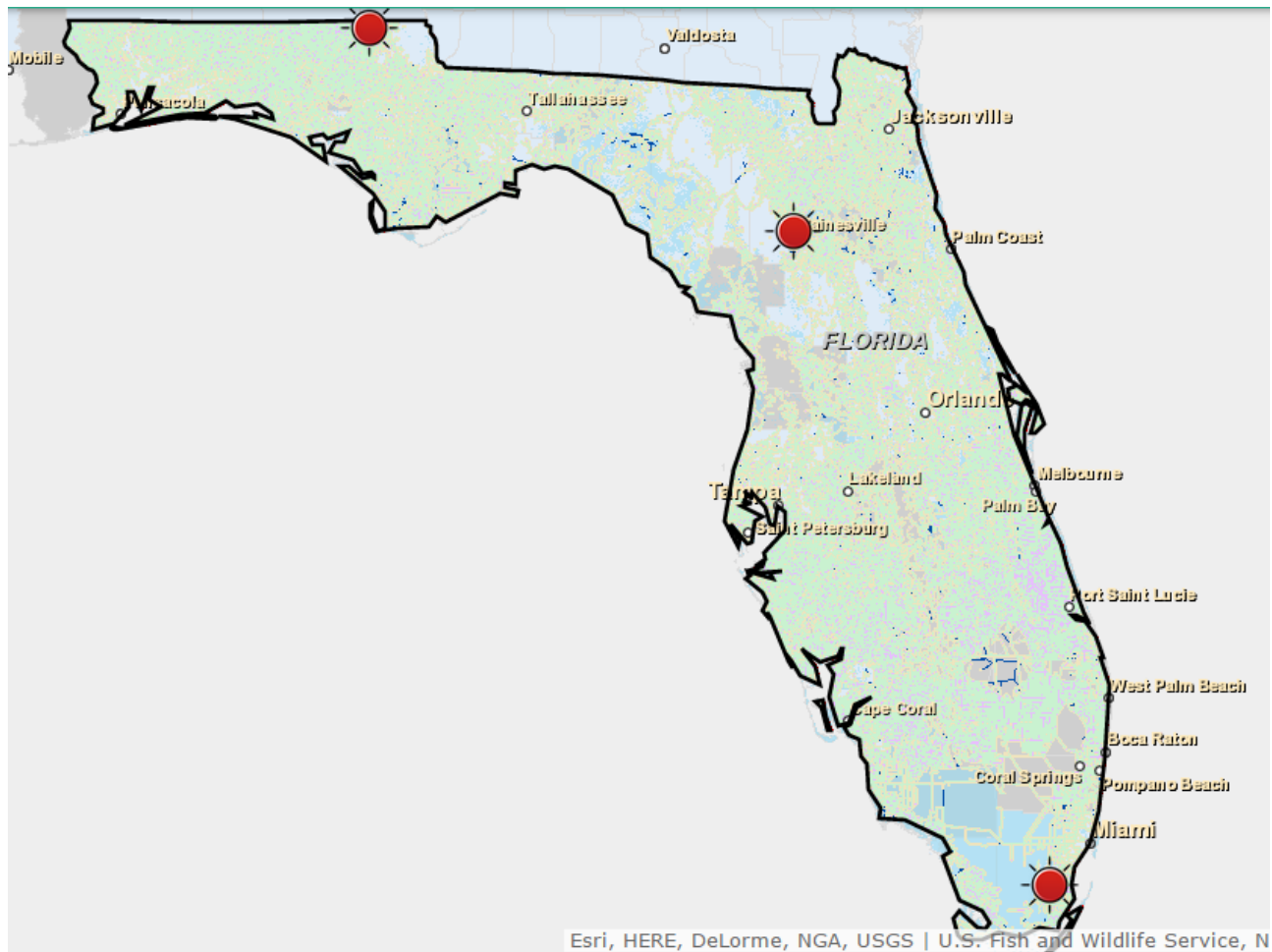
Includes all “waters”—including wetlands—where any part is within the 100-year floodplain and not more than 1,500 feet from a tributary. Light green shading shows the 1,500-foot zone and hash marks show the known FEMA 100-year flood zone (which may be out-of-date or may not be relied upon by the Corps). **Here, FEMA maps indicate a very large 100-year floodplain, so any water at least partially within the green shading is probably deemed “adjacent.”**



Maybe Regulated “Significant Nexus” Waters

Water/wetlands even partially within 4,000 feet (about $\frac{3}{4}$ mile) of a tributary can be regulated on a “significant nexus” finding. Orange shading shows land outside the possible adjacency zone but within the 4,000 foot zone.

Even without mapping around all jurisdictional ditches, the area of possible regulation covers the entire map.



The scope of the final rule's impact in the focus area is similar to the rest of the state

Why Should I Try to Identify WOTUS on the Land I Farm?

- Unpermitted discharges of “pollutants” into WOTUS are unlawful—and carry large potential penalties—even if the farmer or rancher has no knowledge that a feature is WOTUS. If a feature is later determined to be WOTUS, government or citizen enforcers could “reach back” and impose penalties for any discharge that occurred over the past five years.
- Because the WOTUS rule is so broad and complex, however, it will be almost impossible for farmers and ranchers to determine with confidence that any potential “water” feature is not WOTUS.
- Consultants may provide useful advice on identifying wetlands, measuring distances, locating available floodplain maps and searching publicly available historical records. But the only way to be confident that any water feature is not WOTUS is to request a jurisdictional determination or “JD” from the Corps of Engineers.

What Activities May Trigger CWA Liability and Permit Requirements?

- The application from a mechanical applicator (sprayer/spreader/nozzle) of any “pollutant” *in any amount* into a WOTUS requires a section 402 NPDES permit issued by state regulatory agencies or directly from EPA. A permit is required even if the WOTUS is dry at the time of application. Pollutants include, among other things:
 - chemical or biological pesticides (herbicides, insecticides, fungicides and coated seeds)
 - fertilizers (nitrogen, phosphorus, potassium and micro nutrient)
 - manure and manure products (including compost)
- A discharge of “dredged or fill material” can occur as a result of farming or ranching activities that involve moving dirt in a WOTUS. These discharges require a section 404 “dredge and fill” permit issued by the Corps of Engineers (again, even if the feature is dry at the time)—unless the activity qualifies for an exemption explained below. Possibly regulated activities include:
 - manipulating the soil on a field, such as grading, laser leveling, terracing, plowing, deep ripping, etc.;
 - construction and maintenance of roads, fences, ditches, ponds and culverts.
- Congress established several exemptions from the section 404 “dredge and fill” permit requirement. Under these exemptions, farmers and ranchers may not need a permit for plowing, seeding, cultivating, and harvesting (defined as “normal” farming practices), or for certain other activities like minor drainage, upland soil and water conservation practices, drainage ditch maintenance, construction and maintenance of irrigation ditches, farm/stock ponds, farm/forest roads and maintenance of levees/dams.

It is very important to understand that the Corps of Engineers has interpreted these exemptions *very narrowly* and its interpretations will generally be controlling in any enforcement action. As a result, many common farming practices that involve moving dirt in a WOTUS will NOT qualify for an exemption and will trigger a need for a 404 permit.

“Waters of the U.S.” Zones in Florida

Florida	Acres	Share of Total Acres
Total Acres in State	35,722,242	
Total Acres w/i 4,000-foot buffer	28,179,754	79%
Total Acres w/i 1,500-foot buffer	19,608,453	55%
Total Acres w/i 100-foot buffer	2,287,788	6%