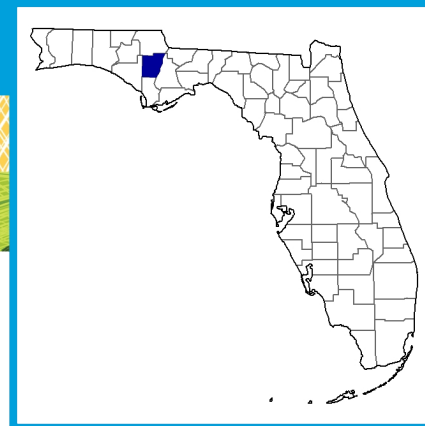


## Calhoun County Florida



### Total and Per Farm Overview, 2017 and change since 2012

	2017	% change since 2012
Number of farms	289	+33
Land in farms (acres)	118,066	+176
Average size of farm (acres)	409	+108
<b>Total</b>	<b>(\$)</b>	
Market value of products sold	22,011,000	+11
Government payments	876,000	+164
Farm-related income	4,602,000	+900
Total farm production expenses	27,462,000	+35
Net cash farm income	27,000	-91
<b>Per farm average</b>	<b>(\$)</b>	
Market value of products sold	76,163	-16
Government payments (average per farm receiving)	28,250	+326
Farm-related income	68,680	+870
Total farm production expenses	95,023	+2
Net cash farm income	92	-93

### (Z) Percent of state agriculture sales

#### Share of Sales by Type (%)

Crops	85
Livestock, poultry, and products	15

#### Land in Farms by Use (%) <sup>a</sup>

Cropland	22
Pastureland	8
Woodland	66
Other	5

#### Acres irrigated: 3,320

3% of land in farms

#### Land Use Practices (% of farms)

No till	7
Reduced till	4
Intensive till	13
Cover crop	7

### Farms by Value of Sales

	Number	Percent of Total <sup>a</sup>
Less than \$2,500	175	61
\$2,500 to \$4,999	24	8
\$5,000 to \$9,999	24	8
\$10,000 to \$24,999	27	9
\$25,000 to \$49,999	6	2
\$50,000 to \$99,999	19	7
\$100,000 or more	14	5

### Farms by Size

	Number	Percent of Total <sup>a</sup>
1 to 9 acres	38	13
10 to 49 acres	125	43
50 to 179 acres	66	23
180 to 499 acres	33	11
500 to 999 acres	16	6
1,000 + acres	11	4

### Market Value of Agricultural Products Sold

	Sales (\$1,000)	Rank in State <sup>b</sup>	Counties Producing Item	Rank in U.S. <sup>b</sup>	Counties Producing Item
<b>Total</b>	<b>22,011</b>	<b>45</b>	<b>67</b>	<b>2,325</b>	<b>3,077</b>
<b>Crops</b>	<b>18,816</b>	<b>40</b>	<b>67</b>	<b>1,689</b>	<b>3,073</b>
Grains, oilseeds, dry beans, dry peas	6	48	57	2,577	2,916
Tobacco	-	-	5	-	323
Cotton and cottonseed	3,794	4	13	304	647
Vegetables, melons, potatoes, sweet potatoes	34	61	65	1,856	2,821
Fruits, tree nuts, berries	192	54	65	1,042	2,748
Nursery, greenhouse, floriculture, sod	9,092	31	65	261	2,601
Cultivated Christmas trees, short rotation woody crops	97	4	36	269	1,384
Other crops and hay	5,601	19	65	446	3,040
<b>Livestock, poultry, and products</b>	<b>3,195</b>	<b>49</b>	<b>67</b>	<b>2,613</b>	<b>3,073</b>
Poultry and eggs	14	56	64	1,678	3,007
Cattle and calves	1,980	45	65	2,171	3,055
Milk from cows	-	-	38	-	1,892
Hogs and pigs	95	14	61	925	2,856
Sheep, goats, wool, mohair, milk	17	54	63	2,241	2,984
Horses, ponies, mules, burros, donkeys	10	54	66	2,296	2,970
Aquaculture	(D)	14	55	(D)	1,251
Other animals and animal products	(D)	(D)	67	(D)	2,878

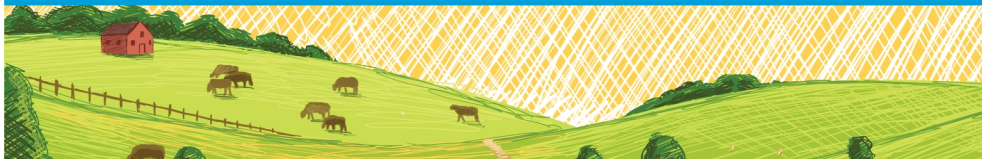
Total Producers <sup>c</sup>	447	Percent of farms that:	Top Crops in Acres <sup>d</sup>	
<b>Sex</b>				
Male	280	Have internet access	Cotton, all	9,000
Female	167		Peanuts for nuts	6,958
			Forage (hay/haylage), all	4,183
			Sod harvested	1,436
			Cultivated Christmas trees	159
<b>Age</b>				
<35	18	Farm organically		
35 – 64	288			
65 and older	141			
<b>Race</b>				
American Indian/Alaska Native	-	Sell directly to consumers		
Asian	2			
Black or African American	5			
Native Hawaiian/Pacific Islander	1			
White	437	Hire farm labor		
More than one race	2			
<b>Other characteristics</b>				
Hispanic, Latino, Spanish origin	12	Are family farms		
With military service	64			
New and beginning farmers	134			
			<b>Livestock Inventory</b> (Dec 31, 2017)	
			Broilers and other meat-type chickens	190
			Cattle and calves	4,744
			Goats	597
			Hogs and pigs	42
			Horses and ponies	185
			Layers	1,022
			Pullets	82
			Sheep and lambs	-
			Turkeys	27

See 2017 Census of Agriculture, U.S. Summary and State Data, for complete footnotes, explanations, definitions, commodity descriptions, and methodology.

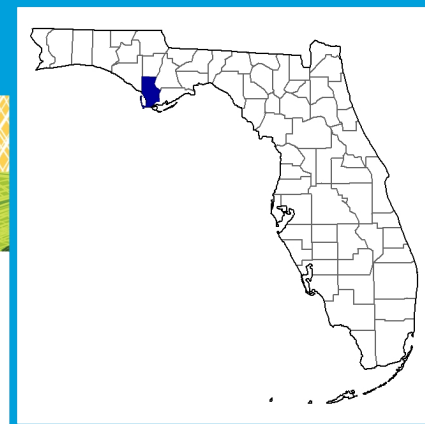
<sup>a</sup> May not add to 100% due to rounding. <sup>b</sup> Among counties whose rank can be displayed. <sup>c</sup> Data collected for a maximum of four producers per farm.

<sup>d</sup> Crop commodity names may be shortened; see full names at [www.nass.usda.gov/go/cropnames.pdf](http://www.nass.usda.gov/go/cropnames.pdf). <sup>e</sup> Position below the line does not indicate rank.

(D) Withheld to avoid disclosing data for individual operations. (NA) Not available. (Z) Less than half of the unit shown. (-) Represents zero.



## Gulf County Florida



### Total and Per Farm Overview, 2017 and change since 2012

	2017	% change since 2012
Number of farms	46	+35
Land in farms (acres)	(D)	(D)
Average size of farm (acres)	(D)	(D)
<b>Total</b>	(\$)	
Market value of products sold	1,055,000	+14
Government payments	17,000	(D)
Farm-related income	(D)	(D)
Total farm production expenses	3,061,000	+254
Net cash farm income	(D)	(D)
<b>Per farm average</b>	(\$)	
Market value of products sold	22,944	-15
Government payments (average per farm receiving)	4,180	(D)
Farm-related income	(D)	(D)
Total farm production expenses	66,540	+161
Net cash farm income	(D)	(D)

### (Z) Percent of state agriculture sales

#### Share of Sales by Type (%)

Crops	(D)
Livestock, poultry, and products	(D)

#### Land in Farms by Use (%) <sup>a</sup>

Cropland	(D)
Pastureland	(D)
Woodland	(D)
Other	(D)

#### Acres irrigated: 40

(D)% of land in farms

#### Land Use Practices (% of farms)

No till	9
Reduced till	-
Intensive till	24
Cover crop	4

### Farms by Value of Sales

	Number	Percent of Total <sup>a</sup>
Less than \$2,500	28	61
\$2,500 to \$4,999	2	4
\$5,000 to \$9,999	6	13
\$10,000 to \$24,999	4	9
\$25,000 to \$49,999	1	2
\$50,000 to \$99,999	2	4
\$100,000 or more	3	7

### Farms by Size

	Number	Percent of Total <sup>a</sup>
1 to 9 acres	2	4
10 to 49 acres	12	26
50 to 179 acres	22	48
180 to 499 acres	7	15
500 to 999 acres	1	2
1,000 + acres	2	4

## Market Value of Agricultural Products Sold

	Sales (\$1,000)	Rank in State <sup>b</sup>	Counties Producing Item	Rank in U.S. <sup>b</sup>	Counties Producing Item
<b>Total</b>	<b>1,055</b>	<b>66</b>	<b>67</b>	<b>3,004</b>	<b>3,077</b>
<b>Crops</b>	<b>(D)</b>	<b>65</b>	<b>67</b>	<b>2,979</b>	<b>3,073</b>
Grains, oilseeds, dry beans, dry peas	-	-	57	-	2,916
Tobacco	-	-	5	-	323
Cotton and cottonseed	-	-	13	-	647
Vegetables, melons, potatoes, sweet potatoes	(D)	64	65	(D)	2,821
Fruits, tree nuts, berries	-	-	65	-	2,748
Nursery, greenhouse, floriculture, sod	-	-	65	-	2,601
Cultivated Christmas trees, short rotation woody crops	-	-	36	-	1,384
Other crops and hay	(D)	(D)	65	(D)	3,040
<b>Livestock, poultry, and products</b>	<b>(D)</b>	<b>65</b>	<b>67</b>	<b>2,851</b>	<b>3,073</b>
Poultry and eggs	-	-	64	-	3,007
Cattle and calves	(D)	64	65	(D)	3,055
Milk from cows	-	-	38	-	1,892
Hogs and pigs	-	-	61	-	2,856
Sheep, goats, wool, mohair, milk	-	-	63	-	2,984
Horses, ponies, mules, burros, donkeys	11	53	66	2,292	2,970
Aquaculture	(D)	(D)	55	(D)	1,251
Other animals and animal products	437	24	67	318	2,878

<b>Total Producers <sup>c</sup></b>	<b>86</b>	<b>Percent of farms that:</b>	<b>Top Crops in Acres <sup>d</sup></b>
<b>Sex</b>			
Male	58	Have internet access	299
Female	28		(D)
<b>Age</b>			Peanuts for nuts (D)
<35	8		Pecans, all (D)
35 – 64	42	Farm organically	Vegetables harvested, all (D)
65 and older	36		Tangerines (D)
<b>Race</b>			
American Indian/Alaska Native	-	Sell directly to consumers	
Asian	-		
Black or African American	2		
Native Hawaiian/Pacific Islander	-		
White	69	Hire farm labor	
More than one race	15		
<b>Other characteristics</b>			
Hispanic, Latino, Spanish origin	-	Are family farms	
With military service	6		
New and beginning farmers	25		

See 2017 Census of Agriculture, U.S. Summary and State Data, for complete footnotes, explanations, definitions, commodity descriptions, and methodology.

<sup>a</sup> May not add to 100% due to rounding. <sup>b</sup> Among counties whose rank can be displayed. <sup>c</sup> Data collected for a maximum of four producers per farm.

<sup>d</sup> Crop commodity names may be shortened; see full names at [www.nass.usda.gov/go/cropnames.pdf](http://www.nass.usda.gov/go/cropnames.pdf). <sup>e</sup> Position below the line does not indicate rank. (D) Withheld to avoid disclosing data for individual operations. (NA) Not available. (Z) Less than half of the unit shown. (-) Represents zero.