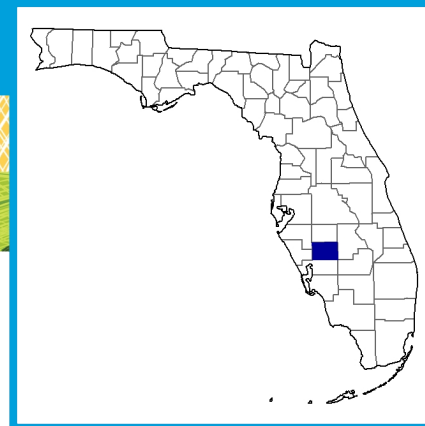


## DeSoto County Florida



### Total and Per Farm Overview, 2017 and change since 2012

	2017	% change since 2012
Number of farms	761	-9
Land in farms (acres)	334,799	+11
Average size of farm (acres)	440	+21
<b>Total</b>	<b>(\$)</b>	
Market value of products sold	168,291,000	-15
Government payments	1,066,000	+444
Farm-related income	5,415,000	-29
Total farm production expenses	156,057,000	(Z)
Net cash farm income	18,715,000	-62
<b>Per farm average</b>	<b>(\$)</b>	
Market value of products sold	221,145	-7
Government payments (average per farm receiving)	10,447	-41
Farm-related income	31,482	-63
Total farm production expenses	205,068	+10
Net cash farm income	24,593	-59

**2** Percent of state agriculture sales

#### Share of Sales by Type (%)

Crops	72
Livestock, poultry, and products	28

#### Land in Farms by Use (%) <sup>a</sup>

Cropland	22
Pastureland	63
Woodland	11
Other	4

**Acres irrigated: 57,653**

17% of land in farms

#### Land Use Practices (% of farms)

No till	1
Reduced till	(Z)
Intensive till	3
Cover crop	1

### Farms by Value of Sales

	Number	Percent of Total <sup>a</sup>
Less than \$2,500	284	37
\$2,500 to \$4,999	59	8
\$5,000 to \$9,999	97	13
\$10,000 to \$24,999	87	11
\$25,000 to \$49,999	50	7
\$50,000 to \$99,999	66	9
\$100,000 or more	118	16

### Farms by Size

	Number	Percent of Total <sup>a</sup>
1 to 9 acres	116	15
10 to 49 acres	321	42
50 to 179 acres	161	21
180 to 499 acres	77	10
500 to 999 acres	30	4
1,000 + acres	56	7

### Market Value of Agricultural Products Sold

	Sales (\$1,000)	Rank in State <sup>b</sup>	Counties Producing Item	Rank in U.S. <sup>b</sup>	Counties Producing Item
<b>Total</b>	<b>168,291</b>	<b>15</b>	<b>67</b>	<b>657</b>	<b>3,077</b>
<b>Crops</b>	<b>121,297</b>	<b>14</b>	<b>67</b>	<b>426</b>	<b>3,073</b>
Grains, oilseeds, dry beans, dry peas	(D)	45	57	(D)	2,916
Tobacco	-	-	5	-	323
Cotton and cottonseed	-	-	13	-	647
Vegetables, melons, potatoes, sweet potatoes	6,776	30	65	271	2,821
Fruits, tree nuts, berries	96,112	4	65	43	2,748
Nursery, greenhouse, floriculture, sod	17,662	22	65	150	2,601
Cultivated Christmas trees, short rotation woody crops	(D)	34	36	637	1,384
Other crops and hay	(D)	39	65	2,139	3,040
<b>Livestock, poultry, and products</b>	<b>46,994</b>	<b>12</b>	<b>67</b>	<b>996</b>	<b>3,073</b>
Poultry and eggs	33	45	64	1,402	3,007
Cattle and calves	31,596	3	65	491	3,055
Milk from cows	12,661	11	38	404	1,892
Hogs and pigs	(D)	32	61	(D)	2,856
Sheep, goats, wool, mohair, milk	34	47	63	1,960	2,984
Horses, ponies, mules, burros, donkeys	281	28	66	763	2,970
Aquaculture	(D)	47	55	(D)	1,251
Other animals and animal products	2,368	6	67	79	2,878

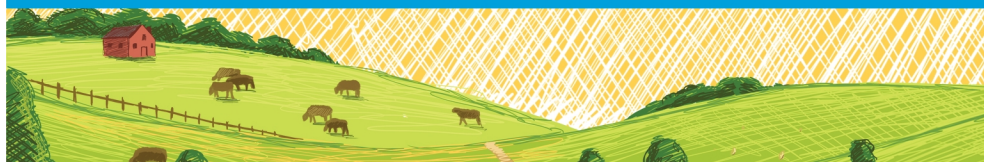
Total Producers <sup>c</sup>	1,266	Percent of farms that:	Top Crops in Acres <sup>d</sup>	
<b>Sex</b>				
Male	813	Have internet access	Oranges, all	50,525
Female	453		Forage (hay/haylage), all	9,286
<b>Age</b>			Sod harvested	3,315
<35	105	Farm organically	Vegetables harvested, all	1,646
35 – 64	708		Watermelons	1,092
65 and older	453			
<b>Race</b>				
American Indian/Alaska Native	6	Sell directly to consumers		
Asian	3			
Black or African American	15	Hire farm labor		
Native Hawaiian/Pacific Islander	10			
White	1,214			
More than one race	18			
<b>Other characteristics</b>				
Hispanic, Latino, Spanish origin	89	Are family farms		
With military service	134			
New and beginning farmers	379			
</				

See 2017 Census of Agriculture, U.S. Summary and State Data, for complete footnotes, explanations, definitions, commodity descriptions, and methodology.

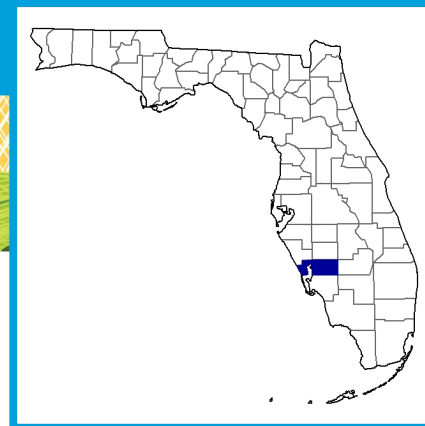
<sup>a</sup> May not add to 100% due to rounding. <sup>b</sup> Among counties whose rank can be displayed. <sup>c</sup> Data collected for a maximum of four producers per farm.

<sup>d</sup> Crop commodity names may be shortened; see full names at [www.nass.usda.gov/go/cropnames.pdf](http://www.nass.usda.gov/go/cropnames.pdf). <sup>e</sup> Position below the line does not indicate rank.

(D) Withheld to avoid disclosing data for individual operations. (NA) Not available. (Z) Less than half of the unit shown. (-) Represents zero.



# Charlotte County Florida



## Total and Per Farm Overview, 2017 and change since 2012

	2017	% change since 2012
Number of farms	306	+8
Land in farms (acres)	112,758	-48
Average size of farm (acres)	368	-52
<b>Total</b>	<b>(\$)</b>	
Market value of products sold	43,882,000	-58
Government payments	329,000	+259
Farm-related income	(D)	(D)
Total farm production expenses	36,293,000	-47
Net cash farm income	8,754,000	-78
<b>Per farm average</b>	<b>(\$)</b>	
Market value of products sold	143,404	-61
Government payments (average per farm receiving)	20,574	+12
Farm-related income	(D)	(D)
Total farm production expenses	118,605	-51
Net cash farm income	28,609	-80

## 1 Percent of state agriculture sales

### Share of Sales by Type (%)

Crops	92
Livestock, poultry, and products	8

### Land in Farms by Use (%) <sup>a</sup>

Cropland	16
Pastureland	(D)
Woodland	40
Other	(D)

### Acres irrigated: 11,639

10% of land in farms

### Land Use Practices (% of farms)

No till	4
Reduced till	1
Intensive till	3
Cover crop	2

## Farms by Value of Sales

	Number	Percent of Total <sup>a</sup>
Less than \$2,500	164	54
\$2,500 to \$4,999	35	11
\$5,000 to \$9,999	14	5
\$10,000 to \$24,999	39	13
\$25,000 to \$49,999	9	3
\$50,000 to \$99,999	14	5
\$100,000 or more	31	10

## Farms by Size

	Number	Percent of Total <sup>a</sup>
1 to 9 acres	52	17
10 to 49 acres	151	49
50 to 179 acres	50	16
180 to 499 acres	19	6
500 to 999 acres	15	5
1,000 + acres	19	6

## Market Value of Agricultural Products Sold

	Sales (\$1,000)	Rank in State <sup>b</sup>	Counties Producing Item	Rank in U.S. <sup>b</sup>	Counties Producing Item
<b>Total</b>	<b>43,882</b>	<b>35</b>	<b>67</b>	<b>1,877</b>	<b>3,077</b>
<b>Crops</b>	<b>40,293</b>	<b>28</b>	<b>67</b>	<b>1,227</b>	<b>3,073</b>
Grains, oilseeds, dry beans, dry peas	(D)	28	57	(D)	2,916
Tobacco	-	-	5	-	323
Cotton and cottonseed	-	-	13	-	647
Vegetables, melons, potatoes, sweet potatoes	21,588	12	65	128	2,821
Fruits, tree nuts, berries	16,381	15	65	122	2,748
Nursery, greenhouse, floriculture, sod	(D)	47	65	633	2,601
Cultivated Christmas trees, short rotation woody crops	-	-	36	-	1,384
Other crops and hay	(D)	62	65	2,756	3,040
<b>Livestock, poultry, and products</b>	<b>3,588</b>	<b>48</b>	<b>67</b>	<b>2,573</b>	<b>3,073</b>
Poultry and eggs	(D)	55	64	(D)	3,007
Cattle and calves	3,297	38	65	1,931	3,055
Milk from cows	-	-	38	-	1,892
Hogs and pigs	-	-	61	-	2,856
Sheep, goats, wool, mohair, milk	69	30	63	1,520	2,984
Horses, ponies, mules, burros, donkeys	184	37	66	1,033	2,970
Aquaculture	(D)	40	55	(D)	1,251
Other animals and animal products	17	56	67	1,359	2,878

Total Producers <sup>c</sup>	487	Percent of farms that:	Top Crops in Acres <sup>d</sup>	
<b>Sex</b>				
Male	305	Have internet access	Oranges, all	9,011
Female	182		Vegetables harvested, all	1,935
<b>Age</b>			Watermelons	917
<35	35	Farm organically	Corn for silage or greenchop	(D)
35 – 64	296		Potatoes	(D)
65 and older	156			
<b>Race</b>				
American Indian/Alaska Native	4	Sell directly to consumers	<b>Livestock Inventory</b> (Dec 31, 2017)	
Asian	5		Broilers and other meat-type chickens	(D)
Black or African American	3	Hire farm labor	Cattle and calves	14,899
Native Hawaiian/Pacific Islander	5		Goats	565
White	459		Hogs and pigs	(D)
More than one race	11		Horses and ponies	221
<b>Other characteristics</b>			Layers	1,445
Hispanic, Latino, Spanish origin	34	Are family farms	Pullets	246
With military service	85		Sheep and lambs	58
New and beginning farmers	155		Turkeys	-

See 2017 Census of Agriculture, U.S. Summary and State Data, for complete footnotes, explanations, definitions, commodity descriptions, and methodology.

<sup>a</sup> May not add to 100% due to rounding. <sup>b</sup> Among counties whose rank can be displayed. <sup>c</sup> Data collected for a maximum of four producers per farm.

<sup>d</sup> Crop commodity names may be shortened; see full names at [www.nass.usda.gov/go/croptnames.pdf](http://www.nass.usda.gov/go/croptnames.pdf). <sup>e</sup> Position below the line does not indicate rank. (D) Withheld to avoid disclosing data for individual operations. (NA) Not available. (Z) Less than half of the unit shown. (-) Represents zero.