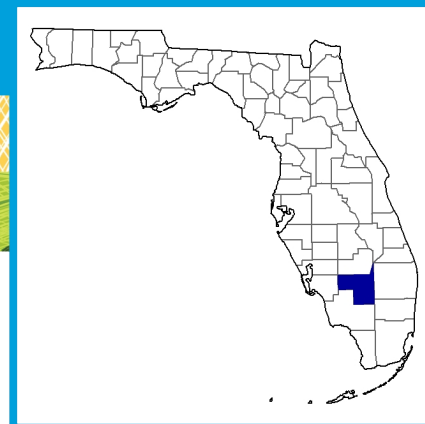


## Hendry County Florida



### Total and Per Farm Overview, 2017 and change since 2012

	2017	% change since 2012
Number of farms	436	+7
Land in farms (acres)	433,113	-13
Average size of farm (acres)	993	-19
<b>Total</b>	<b>(\$)</b>	
Market value of products sold	329,492,000	-34
Government payments	1,163,000	+121
Farm-related income	6,322,000	+68
Total farm production expenses	292,264,000	-23
Net cash farm income	44,714,000	-64
<b>Per farm average</b>	<b>(\$)</b>	
Market value of products sold	755,715	-39
Government payments (average per farm receiving)	22,811	+4
Farm-related income	59,642	-7
Total farm production expenses	670,329	-28
Net cash farm income	102,554	-67

**4** Percent of state agriculture sales

#### Share of Sales by Type (%)

Crops	92
Livestock, poultry, and products	8

#### Land in Farms by Use (%) <sup>a</sup>

Cropland	47
Pastureland	36
Woodland	7
Other	10

**Acres irrigated: 183,264**

42% of land in farms

#### Land Use Practices (% of farms)

No till	1
Reduced till	1
Intensive till	8
Cover crop	1

### Farms by Value of Sales

	Number	Percent of Total <sup>a</sup>
Less than \$2,500	150	34
\$2,500 to \$4,999	27	6
\$5,000 to \$9,999	17	4
\$10,000 to \$24,999	21	5
\$25,000 to \$49,999	37	8
\$50,000 to \$99,999	41	9
\$100,000 or more	143	33

### Farms by Size

	Number	Percent of Total <sup>a</sup>
1 to 9 acres	96	22
10 to 49 acres	126	29
50 to 179 acres	80	18
180 to 499 acres	43	10
500 to 999 acres	44	10
1,000 + acres	47	11

### Market Value of Agricultural Products Sold

	Sales (\$1,000)	Rank in State <sup>b</sup>	Counties Producing Item	Rank in U.S. <sup>b</sup>	Counties Producing Item
<b>Total</b>	<b>329,492</b>	<b>5</b>	<b>67</b>	<b>216</b>	<b>3,077</b>
<b>Crops</b>	<b>301,670</b>	<b>5</b>	<b>67</b>	<b>56</b>	<b>3,073</b>
Grains, oilseeds, dry beans, dry peas	(D)	37	57	(D)	2,916
Tobacco	-	-	5	-	323
Cotton and cottonseed	-	-	13	-	647
Vegetables, melons, potatoes, sweet potatoes	56,668	6	65	54	2,821
Fruits, tree nuts, berries	141,710	3	65	36	2,748
Nursery, greenhouse, floriculture, sod	(D)	35	65	335	2,601
Cultivated Christmas trees, short rotation woody crops	-	-	36	-	1,384
Other crops and hay	96,846	2	65	12	3,040
<b>Livestock, poultry, and products</b>	<b>27,822</b>	<b>18</b>	<b>67</b>	<b>1,393</b>	<b>3,073</b>
Poultry and eggs	(D)	(D)	64	(D)	3,007
Cattle and calves	23,164	6	65	700	3,055
Milk from cows	(D)	27	38	(D)	1,892
Hogs and pigs	(D)	8	61	(D)	2,856
Sheep, goats, wool, mohair, milk	14	58	63	2,299	2,984
Horses, ponies, mules, burros, donkeys	238	35	66	854	2,970
Aquaculture	1,227	12	55	133	1,251
Other animals and animal products	2,808	3	67	68	2,878

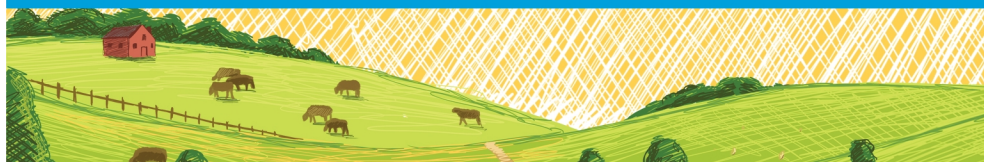
Total Producers <sup>c</sup>	784	Percent of farms that:	Top Crops in Acres <sup>d</sup>	
<b>Sex</b>				
Male	522	Have internet access	Sugarcane for sugar	73,022
Female	262		Oranges, all	68,588
			Vegetables harvested, all	12,329
			Beans, snap	4,507
			Sweet corn	(D)
<b>Age</b>				
<35	73	Farm organically		
35 – 64	450			
65 and older	261			
<b>Race</b>				
American Indian/Alaska Native	10	Sell directly to consumers		
Asian	17			
Black or African American	12			
Native Hawaiian/Pacific Islander	-			
White	742	Hire farm labor		
More than one race	3			
<b>Other characteristics</b>				
Hispanic, Latino, Spanish origin	118	Are family farms		
With military service	66			
New and beginning farmers	247			
			<b>Livestock Inventory</b> (Dec 31, 2017)	
			Broilers and other meat-type chickens	36
			Cattle and calves	57,367
			Goats	201
			Hogs and pigs	875
			Horses and ponies	482
			Layers	605
			Pullets	(D)
			Sheep and lambs	456
			Turkeys	-

See 2017 Census of Agriculture, U.S. Summary and State Data, for complete footnotes, explanations, definitions, commodity descriptions, and methodology.

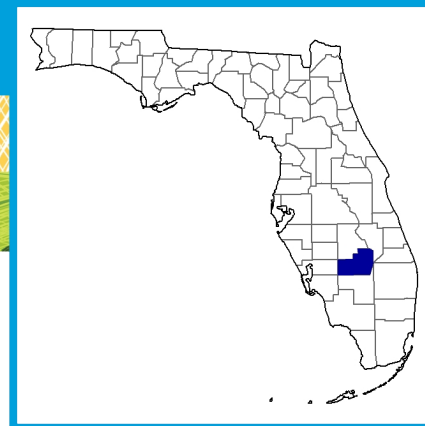
<sup>a</sup> May not add to 100% due to rounding. <sup>b</sup> Among counties whose rank can be displayed. <sup>c</sup> Data collected for a maximum of four producers per farm.

<sup>d</sup> Crop commodity names may be shortened; see full names at [www.nass.usda.gov/go/cropnames.pdf](http://www.nass.usda.gov/go/cropnames.pdf). <sup>e</sup> Position below the line does not indicate rank.

(D) Withheld to avoid disclosing data for individual operations. (NA) Not available. (Z) Less than half of the unit shown. (-) Represents zero.



## Glades County Florida



### Total and Per Farm Overview, 2017 and change since 2012

	2017	% change since 2012
Number of farms	354	+7
Land in farms (acres)	428,689	-3
Average size of farm (acres)	1,211	-9
<b>Total</b>	<b>(\$)</b>	
Market value of products sold	78,207,000	-27
Government payments	869,000	+127
Farm-related income	1,534,000	+87
Total farm production expenses	72,528,000	-18
Net cash farm income	8,082,000	-57
<b>Per farm average</b>	<b>(\$)</b>	
Market value of products sold	220,925	-31
Government payments (average per farm receiving)	19,321	+31
Farm-related income	22,555	-9
Total farm production expenses	204,882	-24
Net cash farm income	22,831	-60

### 1 Percent of state agriculture sales

#### Share of Sales by Type (%)

Crops	63
Livestock, poultry, and products	37

#### Land in Farms by Use (%) <sup>a</sup>

Cropland	10
Pastureland	30
Woodland	42
Other	18

#### Acres irrigated: 65,779

15% of land in farms

#### Land Use Practices (% of farms)

No till	1
Reduced till	(Z)
Intensive till	8
Cover crop	(Z)

### Farms by Value of Sales

	Number	Percent of Total <sup>a</sup>
Less than \$2,500	204	58
\$2,500 to \$4,999	12	3
\$5,000 to \$9,999	16	5
\$10,000 to \$24,999	27	8
\$25,000 to \$49,999	14	4
\$50,000 to \$99,999	24	7
\$100,000 or more	57	16

### Farms by Size

	Number	Percent of Total <sup>a</sup>
1 to 9 acres	35	10
10 to 49 acres	155	44
50 to 179 acres	75	21
180 to 499 acres	25	7
500 to 999 acres	39	11
1,000 + acres	25	7

## Market Value of Agricultural Products Sold

	Sales (\$1,000)	Rank in State <sup>b</sup>	Counties Producing Item	Rank in U.S. <sup>b</sup>	Counties Producing Item
<b>Total</b>	<b>78,207</b>	<b>29</b>	<b>67</b>	<b>1,379</b>	<b>3,077</b>
<b>Crops</b>	<b>49,003</b>	<b>25</b>	<b>67</b>	<b>1,101</b>	<b>3,073</b>
Grains, oilseeds, dry beans, dry peas	(D)	30	57	(D)	2,916
Tobacco	-	-	5	-	323
Cotton and cottonseed	-	-	13	-	647
Vegetables, melons, potatoes, sweet potatoes	(D)	31	65	(D)	2,821
Fruits, tree nuts, berries	16,100	16	65	124	2,748
Nursery, greenhouse, floriculture, sod	(D)	44	65	(D)	2,601
Cultivated Christmas trees, short rotation woody crops	5	26	36	582	1,384
Other crops and hay	24,674	4	65	90	3,040
<b>Livestock, poultry, and products</b>	<b>29,204</b>	<b>17</b>	<b>67</b>	<b>1,359</b>	<b>3,073</b>
Poultry and eggs	22	51	64	1,541	3,007
Cattle and calves	17,292	10	65	896	3,055
Milk from cows	(D)	12	38	(D)	1,892
Hogs and pigs	4	48	61	1,736	2,856
Sheep, goats, wool, mohair, milk	15	55	63	2,268	2,984
Horses, ponies, mules, burros, donkeys	(D)	(D)	66	(D)	2,970
Aquaculture	(D)	(D)	55	(D)	1,251
Other animals and animal products	20	55	67	1,314	2,878

<b>Total Producers <sup>c</sup></b>	<b>555</b>	<b>Percent of farms that:</b>	<b>Top Crops in Acres <sup>d</sup></b>
<b>Sex</b>			
Male	357	Have internet access	66
Female	198		
<b>Age</b>			
<35	31	Farm organically	-
35 – 64	271		
65 and older	253		
<b>Race</b>			
American Indian/Alaska Native	18	Sell directly to consumers	1
Asian	11		
Black or African American	-		
Native Hawaiian/Pacific Islander	-		
White	526	Hire farm labor	29
More than one race	-		
<b>Other characteristics</b>			
Hispanic, Latino, Spanish origin	75	Are family farms	93
With military service	61		
New and beginning farmers	162		
			<b>Livestock Inventory (Dec 31, 2017)</b>
			Broilers and other meat-type chickens (D)
			Cattle and calves 65,136
			Goats 156
			Hogs and pigs 60
			Horses and ponies 463
			Layers 400
			Pullets -
			Sheep and lambs 328
			Turkeys (D)

See 2017 Census of Agriculture, U.S. Summary and State Data, for complete footnotes, explanations, definitions, commodity descriptions, and methodology.

<sup>a</sup> May not add to 100% due to rounding. <sup>b</sup> Among counties whose rank can be displayed. <sup>c</sup> Data collected for a maximum of four producers per farm.

<sup>d</sup> Crop commodity names may be shortened; see full names at [www.nass.usda.gov/go/cropnames.pdf](http://www.nass.usda.gov/go/cropnames.pdf). <sup>e</sup> Position below the line does not indicate rank. (D) Withheld to avoid disclosing data for individual operations. (NA) Not available. (Z) Less than half of the unit shown. (-) Represents zero.