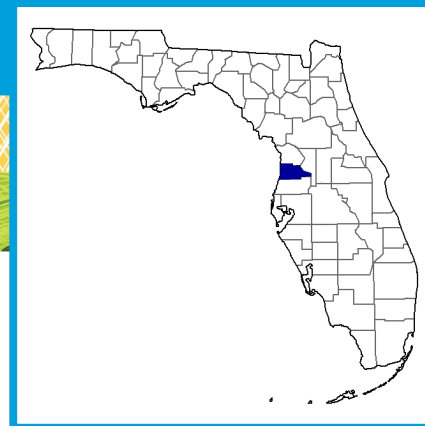


Hernando County Florida



Total and Per Farm Overview, 2017 and change since 2012

	2017	% change since 2012
Number of farms	747	-7
Land in farms (acres)	50,285	-19
Average size of farm (acres)	67	-13
Total	(\$)	
Market value of products sold	20,400,000	-28
Government payments	313,000	-29
Farm-related income	2,884,000	+168
Total farm production expenses	24,679,000	-37
Net cash farm income	-1,081,000	+89
Per farm average	(\$)	
Market value of products sold	27,309	-23
Government payments (average per farm receiving)	8,249	-74
Farm-related income	28,003	+352
Total farm production expenses	33,037	-33
Net cash farm income	-1,448	+88

(Z) Percent of state agriculture sales

Share of Sales by Type (%)

Crops	74
Livestock, poultry, and products	26

Land in Farms by Use (%) ^a

Cropland	16
Pastureland	58
Woodland	21
Other	5

Acres irrigated: 1,967

4% of land in farms

Land Use Practices (% of farms)

No till	2
Reduced till	-
Intensive till	3
Cover crop	3

Farms by Value of Sales

	Number	Percent of Total ^a
Less than \$2,500	434	58
\$2,500 to \$4,999	85	11
\$5,000 to \$9,999	77	10
\$10,000 to \$24,999	73	10
\$25,000 to \$49,999	28	4
\$50,000 to \$99,999	26	3
\$100,000 or more	24	3

Farms by Size

	Number	Percent of Total ^a
1 to 9 acres	171	23
10 to 49 acres	431	58
50 to 179 acres	98	13
180 to 499 acres	30	4
500 to 999 acres	10	1
1,000 + acres	7	1

Market Value of Agricultural Products Sold

	Sales (\$1,000)	Rank in State ^b	Counties Producing Item	Rank in U.S. ^b	Counties Producing Item
Total	20,400	47	67	2,363	3,077
Crops	15,057	43	67	1,826	3,073
Grains, oilseeds, dry beans, dry peas	1	53	57	2,604	2,916
Tobacco	-	-	5	-	323
Cotton and cottonseed	-	-	13	-	647
Vegetables, melons, potatoes, sweet potatoes	135	54	65	1,423	2,821
Fruits, tree nuts, berries	3,205	25	65	260	2,748
Nursery, greenhouse, floriculture, sod	10,698	30	65	237	2,601
Cultivated Christmas trees, short rotation woody crops	84	5	36	295	1,384
Other crops and hay	934	35	65	1,941	3,040
Livestock, poultry, and products	5,343	43	67	2,414	3,073
Poultry and eggs	(D)	(D)	64	(D)	3,007
Cattle and calves	2,711	43	65	2,021	3,055
Milk from cows	(D)	31	38	(D)	1,892
Hogs and pigs	242	4	61	722	2,856
Sheep, goats, wool, mohair, milk	87	25	63	1,381	2,984
Horses, ponies, mules, burros, donkeys	1,910	5	66	78	2,970
Aquaculture	(D)	36	55	(D)	1,251
Other animals and animal products	267	33	67	450	2,878

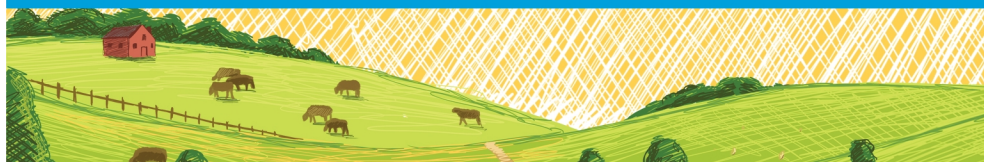
Total Producers ^c	1,244	Percent of farms that:	Top Crops in Acres ^d
Sex			
Male	692	Have internet access	78
Female	552		
Age		Farm organically	(Z)
<35	56		
35 – 64	723		
65 and older	465		
Race		Sell directly to consumers	10
American Indian/Alaska Native	7		
Asian	15		
Black or African American	11		
Native Hawaiian/Pacific Islander	-		
White	1,211	Hire farm labor	16
More than one race	-		
Other characteristics		Are family farms	95
Hispanic, Latino, Spanish origin	81		
With military service	217		
New and beginning farmers	383		
			Livestock Inventory (Dec 31, 2017)
			Broilers and other meat-type chickens (D)
			Cattle and calves 9,457
			Goats 1,166
			Hogs and pigs 210
			Horses and ponies 1,408
			Layers 3,206
			Pullets 516
			Sheep and lambs 312
			Turkeys 314

See 2017 Census of Agriculture, U.S. Summary and State Data, for complete footnotes, explanations, definitions, commodity descriptions, and methodology.

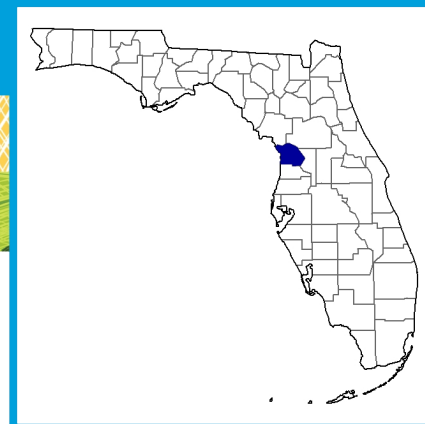
^a May not add to 100% due to rounding. ^b Among counties whose rank can be displayed. ^c Data collected for a maximum of four producers per farm.

^d Crop commodity names may be shortened; see full names at www.nass.usda.gov/go/croptnames.pdf. ^e Position below the line does not indicate rank.

(D) Withheld to avoid disclosing data for individual operations. (NA) Not available. (Z) Less than half of the unit shown. (-) Represents zero.



Citrus County Florida



Total and Per Farm Overview, 2017 and change since 2012

	2017	% change since 2012
Number of farms	609	+9
Land in farms (acres)	55,764	+38
Average size of farm (acres)	92	+26
Total	(\$)	
Market value of products sold	13,470,000	-4
Government payments	197,000	+35
Farm-related income	1,433,000	+60
Total farm production expenses	21,486,000	+30
Net cash farm income	-6,385,000	-374
Per farm average	(\$)	
Market value of products sold	22,119	-12
Government payments (average per farm receiving)	12,337	+69
Farm-related income	17,063	+77
Total farm production expenses	35,281	+20
Net cash farm income	-10,485	-335

(Z) Percent of state agriculture sales

Share of Sales by Type (%)

Crops	67
Livestock, poultry, and products	33

Land in Farms by Use (%) ^a

Cropland	17
Pastureland	46
Woodland	30
Other	6

Acres irrigated: 875

2% of land in farms

Land Use Practices (% of farms)

No till	2
Reduced till	1
Intensive till	2
Cover crop	3

Farms by Value of Sales

	Number	Percent of Total ^a
Less than \$2,500	348	57
\$2,500 to \$4,999	83	14
\$5,000 to \$9,999	72	12
\$10,000 to \$24,999	51	8
\$25,000 to \$49,999	19	3
\$50,000 to \$99,999	14	2
\$100,000 or more	22	4

Farms by Size

	Number	Percent of Total ^a
1 to 9 acres	182	30
10 to 49 acres	276	45
50 to 179 acres	98	16
180 to 499 acres	24	4
500 to 999 acres	16	3
1,000 + acres	13	2

Market Value of Agricultural Products Sold

	Sales (\$1,000)	Rank in State ^b	Counties Producing Item	Rank in U.S. ^b	Counties Producing Item
Total	13,470	49	67	2,555	3,077
Crops	9,059	48	67	2,089	3,073
Grains, oilseeds, dry beans, dry peas	(D)	55	57	2,613	2,916
Tobacco	-	-	5	-	323
Cotton and cottonseed	-	-	13	-	647
Vegetables, melons, potatoes, sweet potatoes	149	53	65	1,391	2,821
Fruits, tree nuts, berries	5,068	23	65	205	2,748
Nursery, greenhouse, floriculture, sod	3,080	42	65	503	2,601
Cultivated Christmas trees, short rotation woody crops	(D)	24	36	(D)	1,384
Other crops and hay	756	38	65	2,109	3,040
Livestock, poultry, and products	4,411	45	67	2,495	3,073
Poultry and eggs	51	38	64	1,239	3,007
Cattle and calves	3,147	41	65	1,951	3,055
Milk from cows	-	-	38	-	1,892
Hogs and pigs	51	20	61	1,091	2,856
Sheep, goats, wool, mohair, milk	285	4	63	572	2,984
Horses, ponies, mules, burros, donkeys	255	32	66	816	2,970
Aquaculture	141	24	55	218	1,251
Other animals and animal products	481	22	67	300	2,878

Total Producers ^c	1,105	Percent of farms that:	Top Crops in Acres ^d	
Sex				
Male	601	Have internet access	Forage (hay/haylage), all	5,821
Female	504		Field/grass seed crops, all	(D)
			Land in berries	370
			Nursery stock crops	214
			Blueberries, all	200
Age				
<35	68	Farm organically		
35 – 64	652			
65 and older	385			
Race				
American Indian/Alaska Native	-	Sell directly to consumers		
Asian	3			
Black or African American	38			
Native Hawaiian/Pacific Islander	2			
White	1,052	Hire farm labor		
More than one race	10			
Other characteristics				
Hispanic, Latino, Spanish origin	54	Are family farms		
With military service	152			
New and beginning farmers	408			
			Livestock Inventory (Dec 31, 2017)	
			Broilers and other meat-type chickens	216
			Cattle and calves	8,294
			Goats	1,373
			Hogs and pigs	279
			Horses and ponies	1,082
			Layers	3,955
			Pullets	318
			Sheep and lambs	538
			Turkeys	132

See 2017 Census of Agriculture, U.S. Summary and State Data, for complete footnotes, explanations, definitions, commodity descriptions, and methodology.

^a May not add to 100% due to rounding. ^b Among counties whose rank can be displayed. ^c Data collected for a maximum of four producers per farm.

^d Crop commodity names may be shortened; see full names at www.nass.usda.gov/go/cropnames.pdf. ^e Position below the line does not indicate rank.

(D) Withheld to avoid disclosing data for individual operations. (NA) Not available. (Z) Less than half of the unit shown. (-) Represents zero.