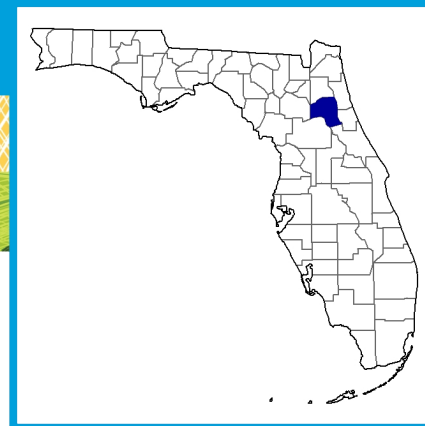


Putnam County Florida



Total and Per Farm Overview, 2017 and change since 2012

	2017	% change since 2012
Number of farms	564	+31
Land in farms (acres)	84,656	+20
Average size of farm (acres)	150	-8
Total	(\$)	
Market value of products sold	46,069,000	+4
Government payments	466,000	+205
Farm-related income	1,216,000	+26
Total farm production expenses	39,318,000	+10
Net cash farm income	8,433,000	-11
Per farm average	(\$)	
Market value of products sold	81,682	-21
Government payments (average per farm receiving)	12,944	+95
Farm-related income	9,504	+16
Total farm production expenses	69,713	-16
Net cash farm income	14,951	-32

1 Percent of state agriculture sales

Share of Sales by Type (%)

Crops	76
Livestock, poultry, and products	24

Land in Farms by Use (%) ^a

Cropland	16
Pastureland	35
Woodland	42
Other	8

Acres irrigated: 6,707

8% of land in farms

Land Use Practices (% of farms)

No till	8
Reduced till	2
Intensive till	5
Cover crop	2

Farms by Value of Sales

	Number	Percent of Total ^a
Less than \$2,500	285	51
\$2,500 to \$4,999	81	14
\$5,000 to \$9,999	66	12
\$10,000 to \$24,999	44	8
\$25,000 to \$49,999	19	3
\$50,000 to \$99,999	29	5
\$100,000 or more	40	7

Farms by Size

	Number	Percent of Total ^a
1 to 9 acres	132	23
10 to 49 acres	252	45
50 to 179 acres	116	21
180 to 499 acres	33	6
500 to 999 acres	15	3
1,000 + acres	16	3

Market Value of Agricultural Products Sold

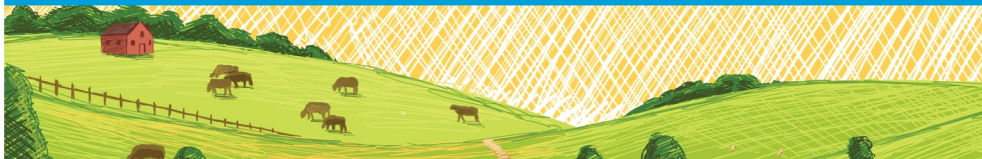
	Sales (\$1,000)	Rank in State ^b	Counties Producing Item	Rank in U.S. ^b	Counties Producing Item
Total	46,069	34	67	1,821	3,077
Crops	34,994	30	67	1,329	3,073
Grains, oilseeds, dry beans, dry peas	(D)	36	57	(D)	2,916
Tobacco	-	-	5	-	323
Cotton and cottonseed	-	-	13	-	647
Vegetables, melons, potatoes, sweet potatoes	18,329	14	65	141	2,821
Fruits, tree nuts, berries	1,645	30	65	358	2,748
Nursery, greenhouse, floriculture, sod	14,361	27	65	181	2,601
Cultivated Christmas trees, short rotation woody crops	(D)	13	36	(D)	1,384
Other crops and hay	584	42	65	2,250	3,040
Livestock, poultry, and products	11,074	35	67	2,037	3,073
Poultry and eggs	(D)	22	64	(D)	3,007
Cattle and calves	3,881	34	65	1,840	3,055
Milk from cows	3,999	16	38	670	1,892
Hogs and pigs	(D)	26	61	(D)	2,856
Sheep, goats, wool, mohair, milk	138	14	63	1,043	2,984
Horses, ponies, mules, burros, donkeys	36	49	66	1,960	2,970
Aquaculture	1,939	11	55	118	1,251
Other animals and animal products	437	25	67	319	2,878

Total Producers ^c	920	Percent of farms that:	Top Crops in Acres ^d	
Sex				
Male	559	Have internet access	Vegetables harvested, all	4,744
Female	361		Potatoes	(D)
Age			Forage (hay/haylage), all	3,244
<35	62	Farm organically	Floriculture and bedding crops	813
35 – 64	532		Broccoli	(D)
65 and older	326			
Race				
American Indian/Alaska Native	4	Sell directly to consumers	Livestock Inventory (Dec 31, 2017)	
Asian	6		Broilers and other	
Black or African American	13		meat-type chickens	1,189
Native Hawaiian/Pacific Islander	-	Hire farm labor	Cattle and calves	11,230
White	896		Goats	1,478
More than one race	1		Hogs and pigs	238
Other characteristics			Horses and ponies	428
Hispanic, Latino, Spanish origin	35	Are family farms	Layers	(D)
With military service	154		Pullets	252
New and beginning farmers	290		Sheep and lambs	32
			Turkeys	139

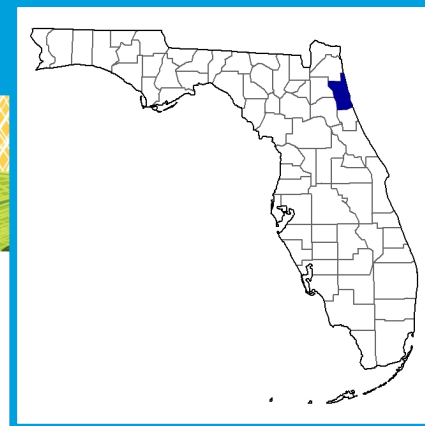
See 2017 Census of Agriculture, U.S. Summary and State Data, for complete footnotes, explanations, definitions, commodity descriptions, and methodology.

^a May not add to 100% due to rounding. ^b Among counties whose rank can be displayed. ^c Data collected for a maximum of four producers per farm.

^d Crop commodity names may be shortened; see full names at www.nass.usda.gov/go/croptnames.pdf. ^e Position below the line does not indicate rank. (D) Withheld to avoid disclosing data for individual operations. (NA) Not available. (Z) Less than half of the unit shown. (-) Represents zero.



St. Johns County Florida



Total and Per Farm Overview, 2017 and change since 2012

	2017	% change since 2012
Number of farms	253	+35
Land in farms (acres)	34,400	+2
Average size of farm (acres)	136	-24
Total	(\$)	
Market value of products sold	61,380,000	-12
Government payments	(D)	(D)
Farm-related income	3,060,000	+329
Total farm production expenses	49,348,000	-16
Net cash farm income	15,156,000	+27
Per farm average	(\$)	
Market value of products sold	242,608	-35
Government payments (average per farm receiving)	(D)	(D)
Farm-related income	52,754	+284
Total farm production expenses	195,052	-37
Net cash farm income	59,906	-6

1 Percent of state agriculture sales

Share of Sales by Type (%)

Crops	95
Livestock, poultry, and products	5

Land in Farms by Use (%) ^a

Cropland	51
Pastureland	20
Woodland	21
Other	9

Acres irrigated: 14,440

42% of land in farms

Land Use Practices (% of farms)

No till	5
Reduced till	4
Intensive till	10
Cover crop	9

Farms by Value of Sales

	Number	Percent of Total ^a
Less than \$2,500	119	47
\$2,500 to \$4,999	9	4
\$5,000 to \$9,999	26	10
\$10,000 to \$24,999	32	13
\$25,000 to \$49,999	14	6
\$50,000 to \$99,999	16	6
\$100,000 or more	37	15

Farms by Size

	Number	Percent of Total ^a
1 to 9 acres	83	33
10 to 49 acres	91	36
50 to 179 acres	43	17
180 to 499 acres	13	5
500 to 999 acres	15	6
1,000 + acres	8	3

Market Value of Agricultural Products Sold

	Sales (\$1,000)	Rank in State ^b	Counties Producing Item	Rank in U.S. ^b	Counties Producing Item
Total	61,380	31	67	1,584	3,077
Crops	58,493	22	67	992	3,073
Grains, oilseeds, dry beans, dry peas	1,290	11	57	2,054	2,916
Tobacco	-	-	5	-	323
Cotton and cottonseed	-	-	13	-	647
Vegetables, melons, potatoes, sweet potatoes	41,137	8	65	81	2,821
Fruits, tree nuts, berries	(D)	62	65	(D)	2,748
Nursery, greenhouse, floriculture, sod	15,732	25	65	164	2,601
Cultivated Christmas trees, short rotation woody crops	(D)	29	36	(D)	1,384
Other crops and hay	324	48	65	2,496	3,040
Livestock, poultry, and products	2,886	52	67	2,638	3,073
Poultry and eggs	(D)	(D)	64	(D)	3,007
Cattle and calves	1,451	51	65	2,298	3,055
Milk from cows	-	-	38	-	1,892
Hogs and pigs	6	47	61	1,678	2,856
Sheep, goats, wool, mohair, milk	21	53	63	2,182	2,984
Horses, ponies, mules, burros, donkeys	737	11	66	274	2,970
Aquaculture	72	29	55	241	1,251
Other animals and animal products	(D)	21	67	(D)	2,878

Total Producers ^c	463	Percent of farms that:	Top Crops in Acres ^d	
Sex				
Male	252	Have internet access	Vegetables harvested, all	11,640
Female	211		Potatoes	8,426
			Corn for grain	2,262
			Sod harvested	1,340
			Cabbage, head	(D)
Age				
<35	40	Farm organically		
35 – 64	275			
65 and older	148			
Race				
American Indian/Alaska Native	2	Sell directly to consumers		
Asian	2			
Black or African American	2			
Native Hawaiian/Pacific Islander	-			
White	457	Hire farm labor		
More than one race	-			
Other characteristics				
Hispanic, Latino, Spanish origin	8	Are family farms		
With military service	58			
New and beginning farmers	166			
			Livestock Inventory (Dec 31, 2017)	
			Broilers and other meat-type chickens	864
			Cattle and calves	3,039
			Goats	249
			Hogs and pigs	20
			Horses and ponies	725
			Layers	1,708
			Pullets	106
			Sheep and lambs	65
			Turkeys	53

See 2017 Census of Agriculture, U.S. Summary and State Data, for complete footnotes, explanations, definitions, commodity descriptions, and methodology.

^a May not add to 100% due to rounding. ^b Among counties whose rank can be displayed. ^c Data collected for a maximum of four producers per farm.

^d Crop commodity names may be shortened; see full names at www.nass.usda.gov/go/cropnames.pdf. ^e Position below the line does not indicate rank. (D) Withheld to avoid disclosing data for individual operations. (NA) Not available. (Z) Less than half of the unit shown. (-) Represents zero.