



Tropical Update



12:00 PM EDT

Tuesday, August 29, 2023

Hurricane Idalia

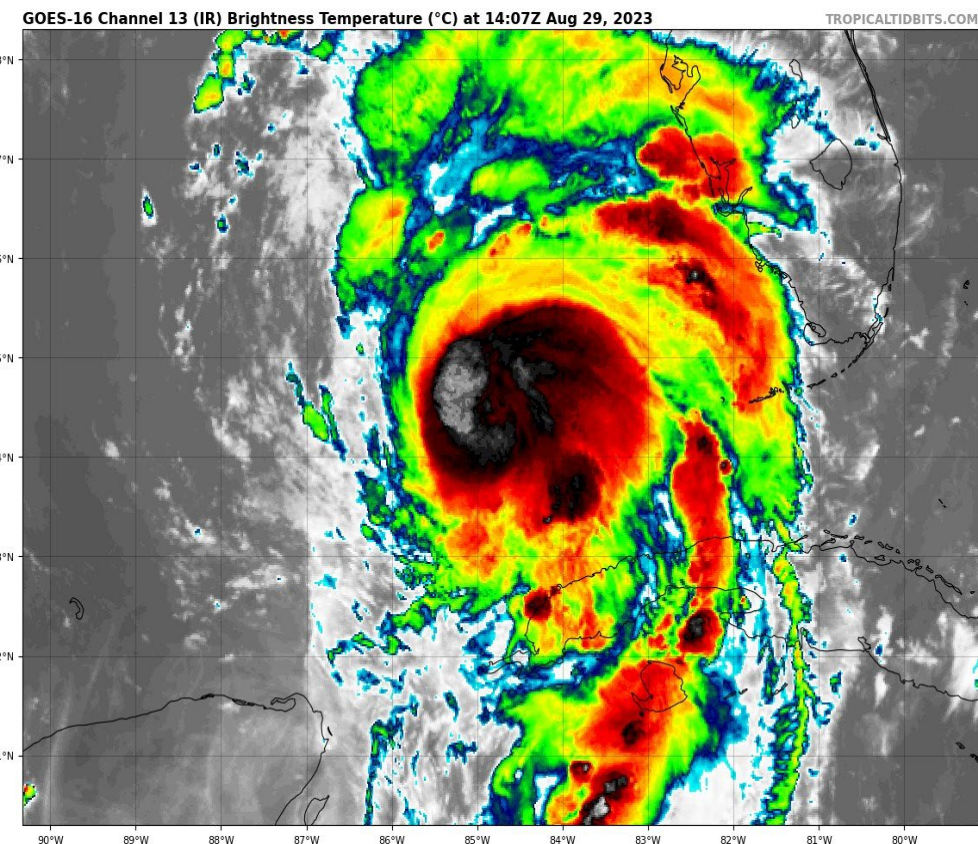
This update is intended for government and emergency response officials, and is provided for informational and situational awareness purposes only. Forecast conditions are subject to change based on a variety of environmental factors. For additional information, or for any life safety concerns with an active weather event please contact your County Emergency Management or Public Safety Office, local National Weather Service forecast office, or visit the National Hurricane Center website at www.hurricanes.gov.



Hurricane Idalia

12:00 PM EDT Tuesday: Florida Threats & Changes Since Last Packet

		MINIMAL	LOW	MODERATE	HIGH	EXTREME
	WINDS	Green	Yellow	Orange	Red	Purple
	STORM SURGE	Green	Yellow	Orange	Red	Purple
	FLASH FLOODING	Green	Yellow	Orange	Red	Grey
	TORNADOES	Green	Yellow	Orange	Grey	Grey
		LOW		MODERATE		HIGH
	RIP CURRENTS	Yellow		Orange		Red



Overview/Recent Changes:

With the 11:00 AM update, Idalia has maximum sustained winds of 85 mph making it a Category 1 hurricane. The storm is currently located about 120 miles west of the Dry Tortugas and about 275 miles south-southwest of Tampa, Florida. Rapid intensification is likely through landfall on Wednesday. Forecasted Storm Surge values have increased from the Aucilla River to Yankeetown with peak surge now at 10-15'. Hurricane Warnings have been extended further westward into the Big Bend region and into the Suwannee Valley.



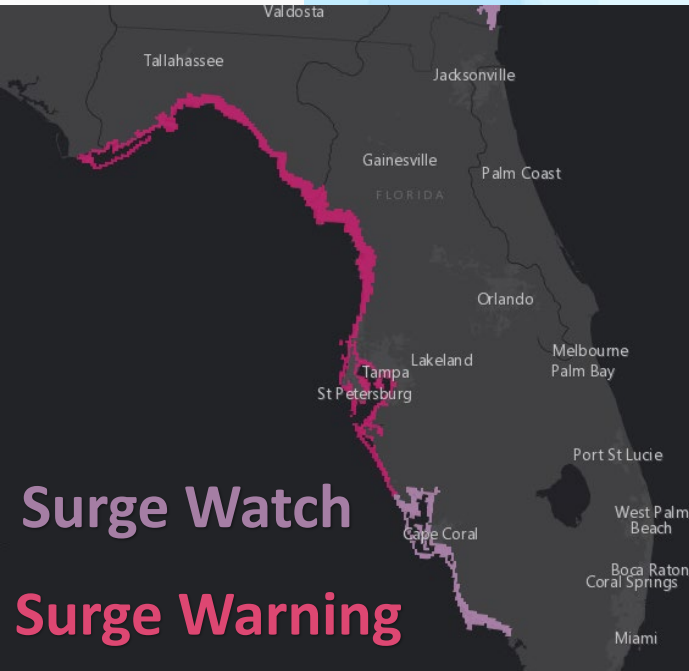
Current Watches/Warnings

As of 11:00 AM EDT Tuesday

- **Hurricane Warning:**
 - Coastal Franklin, Wakulla, Jefferson, Madison, Taylor, Hamilton, Suwanee, Lafayette, Dixie, Columbia, Gilchrist, Levy, Alachua, western Marion, Citrus, Sumter, Hernando, Pasco, Hillsborough, Pinellas, Manatee, Leon, Baker, Bradford, Union
- **Hurricane Watch:**
 - central Marion, Sarasota
- **Tropical Storm Warning:**
 - Gulf, Liberty, Gadsden, Nassau, Duval, Union, Clay, St. Johns, Putnam, Flagler, central Marion, eastern Marion, Volusia, Lake, Seminole, Orange, Brevard, Osceola, Polk, Hardee, Desoto, Sarasota, Charlotte, coastal Collier, Lee, Dry Tortugas
- **Tropical Storm Watch:**
 - Inland Collier and Lower Keys
- **Storm Surge Warning:**
 - Englewood northward (Charlotte/Sarasota border) to Indian Pass (Franklin/Gulf border), including Tampa Bay
- **Storm Surge Watch:**
 - Englewood (Charlotte/Sarasota border) to Chokoloskee (Collier/Monroe border), including Charlotte Harbor



Hurricane Warning
TS Warning
Hurricane Watch
TS Watch

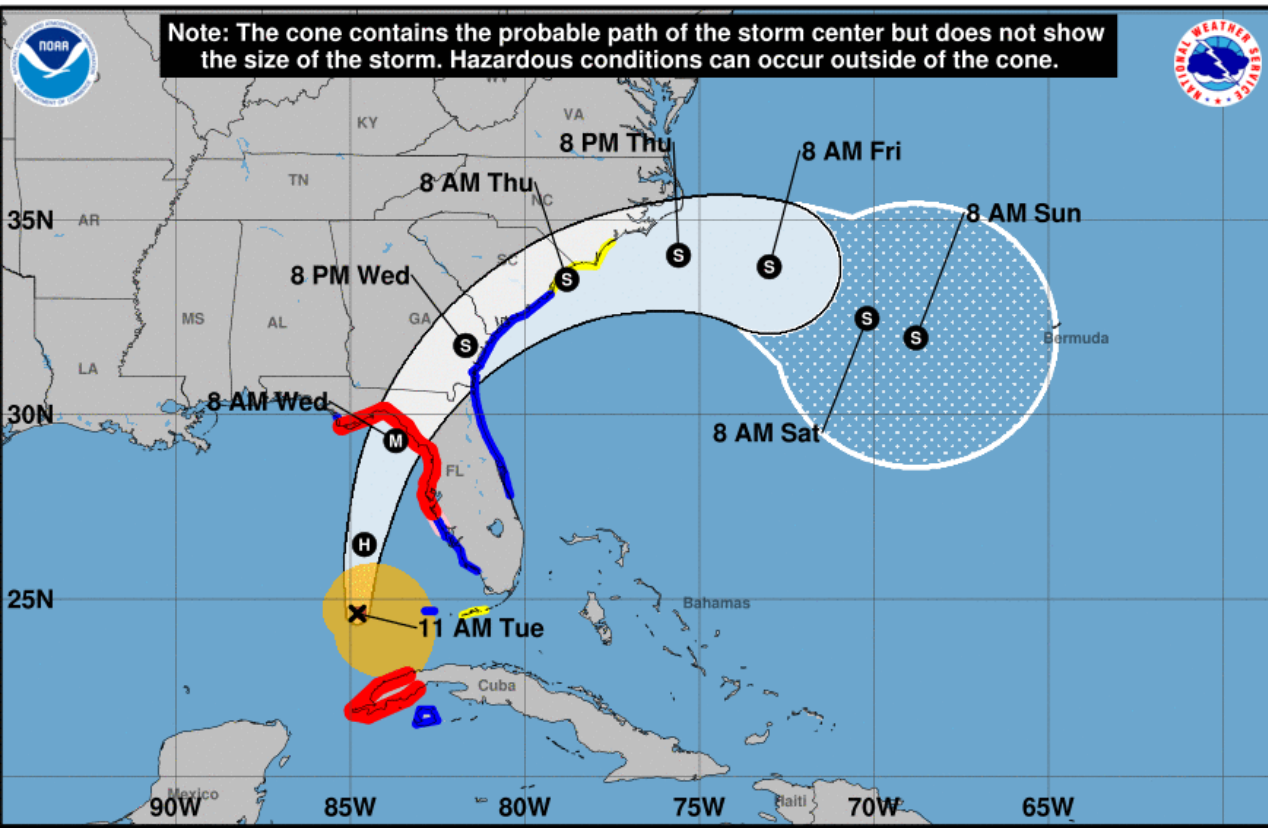


Surge Watch
Surge Warning



Forecast Cone

Hurricane Idalia ([LINK](#))



Hurricane Idalia
 Tuesday August 29, 2023
 11 AM EDT Advisory 12
 NWS National Hurricane Center

Current information: x
 Center location 24.6 N 84.8 W
 Maximum sustained wind 85 mph
 Movement N at 14 mph

Forecast positions:
 ● Tropical Cyclone ○ Post/Potential TC
 Sustained winds: D < 39 mph
 S 39-73 mph H 74-110 mph M > 110 mph

Potential track area: Day 1-3 (solid line), Day 4-5 (dotted line)
Watches: Hurricane (pink), Trop Stm (yellow)
Warnings: Hurricane (red), Trop Stm (blue)
Current wind field estimate: Hurricane (brown), Trop Stm (yellow)

- **Location:** 120 miles W of the Dry Tortugas; 275 miles SSW of Tampa
- **Maximum Sustained Winds:** 85 mph; Category 1
- **Current Movement:** N at 14 mph
- **FL Watches/Warnings:**
 - **Hurricane Warning:** Big Bend, inland East Big Bend, coastal West Central Florida, Suwannee Valley
 - **Hurricane Watch:** Central Marion and Sarasota
 - **Tropical Storm Warning:** western Big Bend, Northeast Florida, East Central Florida, inland Central Florida, coastal Southwest Florida
 - **Tropical Storm Watch:** Lower Keys

A faster north and north-northeastward motion is expected to continue today and Wednesday. On the forecast track, the center of Idalia is forecast to reach the Gulf Coast within the Hurricane Warning area on Wednesday and move close to the Carolina coastline on Thursday. Maximum sustained winds have now increased to 85 mph, making Idalia a Category 1 hurricane. Rapid intensification is likely through landfall, and Idalia is forecast to become a major hurricane before landfall on Wednesday morning.

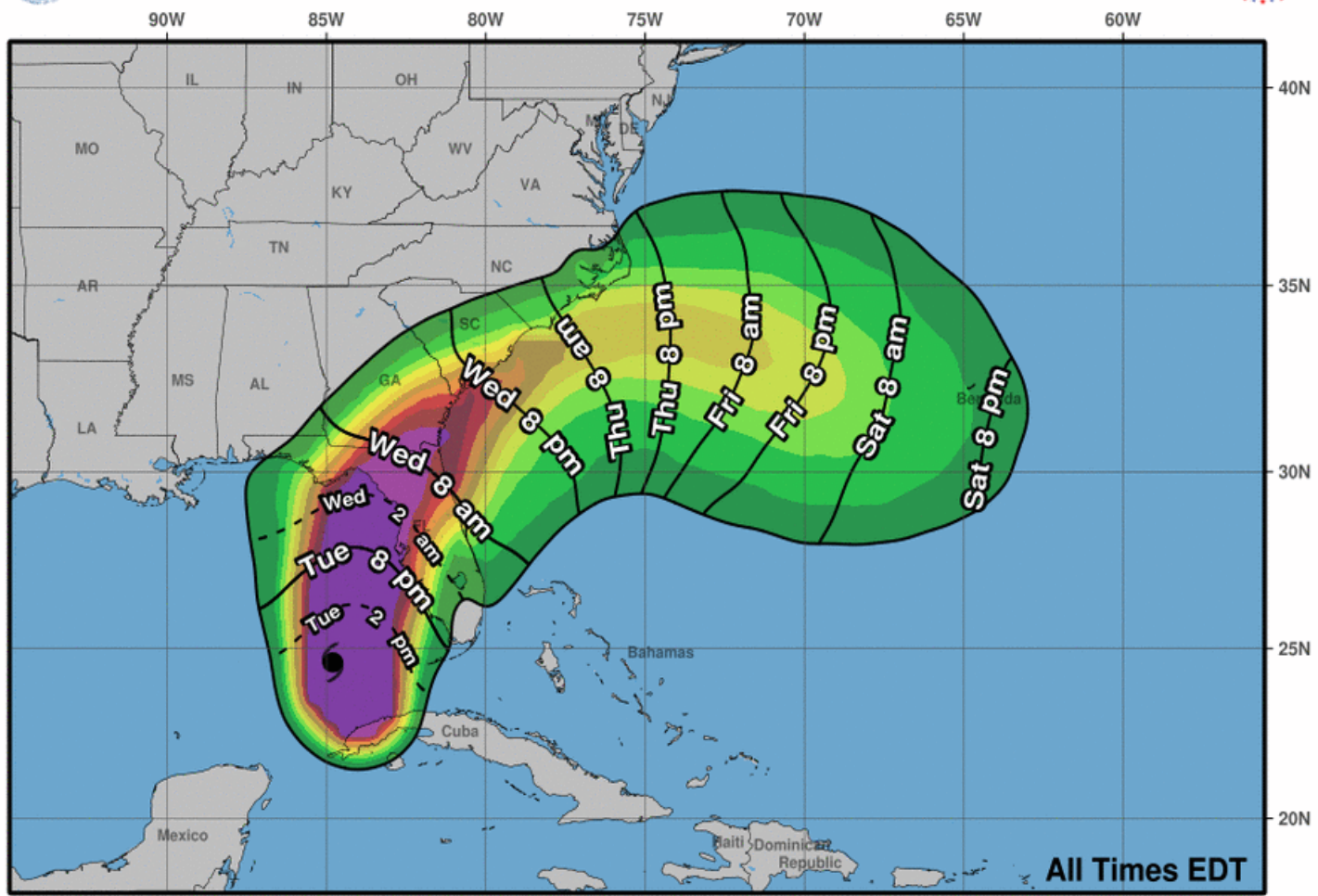


Tropical Storm-Force Wind Probabilities

Hurricane Idalia



Most Likely Arrival Time of Tropical-Storm-Force Winds



Hurricane Idalia
 Tue. Aug. 29, 2023 11 am EDT
 Advisory 12

Storm Location & Wind Speed

- < 34 kt (39 mph)
- 34-63 kt (39-73 mph)
- ≥ 64 kt (74 mph)

5-day chance of receiving sustained 34+ kt (39+ mph) winds

5 10 20 30 40 50 60 70 80 90 100 %

- Key West – 5% (-12%)
- Naples – 28% (-16%)
- Tampa – 95% (+4%)
- Orlando – 32% (-1%)
- Cedar Key – 99% (+2%)
- Tallahassee – 63% (+10%)
- St. Marks – 76% (+11%)
- Apalachicola – 72% (+6%)
- Panama City – 37% (+2%)
- Jacksonville – 86% (+10%)

The numbers in parenthesis show the change in probability since the previous briefing packet.

Probabilities for tropical storm-force winds continue to increase along the Florida Big Bend, Nature Coast, and West-Central. Tropical impacts can be anticipated to begin as early as Tuesday morning along portions of the Southwest Florida and expanding northward throughout the day. The most likely timeframe for deteriorating conditions across the state will be Tuesday evening and overnight into Wednesday from south to north as Idalia continues to progress towards the Florida Gulf Coast. As Idalia pushes inland on Wednesday, deteriorating conditions will expand across the Suwannee River Valley and Northeast Florida.



Tropical Storm-Force Wind Timing

Hurricane Idalia

ON		Tropical Storm (>40 mph)		Strong Tropical Storm (>58 mph)	
Title	State	Earliest(hrs)	Most Likely(hrs)	Earliest(hrs)	Most Likely(hrs)
Alachua	FL	08/30 2AM(15)	08/30 4AM(17)	08/30 6AM(19)	08/30 7AM(20)
Baker	FL	08/30 4AM(17)	08/30 6AM(19)	08/30 9AM(22)	08/30 10AM(23)
Bay	FL	08/30 12AM(13)	08/30 6AM(19)	n/a	n/a
Bradford	FL	08/30 3AM(16)	08/30 5AM(18)	08/30 7AM(20)	08/30 9AM(22)
Brevard	FL	08/29 8PM(9)	08/30 5AM(18)	n/a	n/a
Broward	FL	08/29 5PM(6)	08/30 2AM(15)	n/a	n/a
Calhoun	FL	08/30 4AM(17)	08/30 7AM(20)	n/a	n/a
Charlotte	FL	08/29 5PM(6)	08/29 7PM(8)	n/a	n/a
Citrus	FL	08/29 10PM(11)	08/29 11PM(12)	08/30 2AM(15)	08/30 3AM(16)
Clay	FL	08/30 4AM(17)	08/30 6AM(19)	08/30 8AM(21)	08/30 10AM(23)
Collier	FL	08/29 3PM(4)	08/29 8PM(9)	n/a	n/a
Columbia	FL	08/30 4AM(17)	08/30 5AM(18)	08/30 7AM(20)	08/30 9AM(22)
DeSoto	FL	08/29 6PM(7)	08/30 12AM(13)	n/a	n/a
Dixie	FL	08/30 2AM(15)	08/30 4AM(17)	08/30 6AM(19)	08/30 7AM(20)
Duval	FL	08/30 5AM(18)	08/30 7AM(20)	08/30 9AM(22)	08/30 12PM(25)
Flagler	FL	08/30 5AM(18)	08/30 8AM(21)	n/a	n/a
Franklin	FL	08/30 12AM(13)	08/30 3AM(16)	08/30 4AM(17)	08/30 6AM(19)
Gadsden	FL	08/30 5AM(18)	08/30 7AM(20)	08/30 7AM(20)	08/30 8AM(21)
Gilchrist	FL	08/30 2AM(15)	08/30 4AM(17)	08/30 6AM(19)	08/30 7AM(20)
Glades	FL	08/29 5PM(6)	08/30 1AM(14)	n/a	n/a
Gulf	FL	08/30 1AM(14)	08/30 3AM(16)	08/30 4AM(17)	08/30 6AM(19)
Hamilton	FL	08/30 5AM(18)	08/30 7AM(20)	08/30 9AM(22)	08/30 11AM(24)
Hardee	FL	08/29 6PM(7)	08/30 12AM(13)	n/a	n/a

Hendry	FL	08/29 5PM(6)	08/30 1AM(14)	n/a	n/a
Hernando	FL	08/29 8PM(9)	08/29 10PM(11)	08/30 12AM(13)	08/30 2AM(15)
Highlands	FL	08/29 6PM(7)	08/30 1AM(14)	n/a	n/a
Hillsborough	FL	08/29 9PM(10)	08/29 11PM(12)	08/30 2AM(15)	08/30 4AM(17)
Holmes	FL	08/29 8PM(9)	08/30 7AM(20)	n/a	n/a
Indian River	FL	08/29 6PM(7)	08/30 4AM(17)	n/a	n/a
Jackson	FL	08/30 3AM(16)	08/30 7AM(20)	n/a	n/a
Jefferson	FL	08/30 2AM(15)	08/30 4AM(17)	08/30 6AM(19)	08/30 7AM(20)
Lafayette	FL	08/30 3AM(16)	08/30 5AM(18)	08/30 6AM(19)	08/30 8AM(21)
Lake	FL	08/30 12AM(13)	08/30 2AM(15)	n/a	n/a
Lee	FL	08/29 5PM(6)	08/29 7PM(8)	n/a	n/a
Leon	FL	08/30 5AM(18)	08/30 7AM(20)	08/30 7AM(20)	08/30 8AM(21)
Levy	FL	08/29 11PM(12)	08/30 1AM(14)	08/30 4AM(17)	08/30 5AM(18)
Liberty	FL	08/30 3AM(16)	08/30 6AM(19)	08/30 6AM(19)	08/30 7AM(20)
Madison	FL	08/30 5AM(18)	08/30 7AM(20)	08/30 7AM(20)	08/30 9AM(22)
Manatee	FL	08/29 6PM(7)	08/29 8PM(9)	n/a	n/a
Marion	FL	08/30 1AM(14)	08/30 3AM(16)	08/30 6AM(19)	08/30 7AM(20)
Martin	FL	08/29 5PM(6)	08/30 3AM(16)	n/a	n/a
Monroe	FL	08/29 3PM(4)	08/29 8PM(9)	n/a	n/a
Nassau	FL	08/30 7AM(20)	08/30 9AM(22)	08/30 11AM(24)	08/30 1PM(26)
Okeechobee	FL	08/29 6PM(7)	08/30 1AM(14)	n/a	n/a
Orange	FL	08/30 1AM(14)	08/30 4AM(17)	n/a	n/a



Tropical Storm-Force Wind Probabilities

Hurricane Idalia

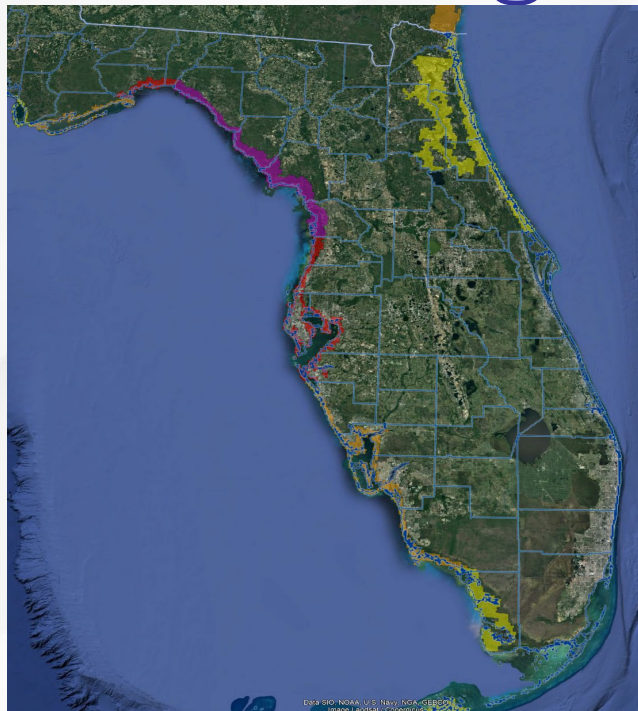
County	Orange	FL	08/30 1AM(14)	08/30 4AM(17)	n/a	n/a
County	Osceola	FL	08/29 8PM(9)	08/30 4AM(17)	n/a	n/a
County	Palm Beach	FL	08/29 5PM(6)	08/30 2AM(15)	n/a	n/a
County	Pasco	FL	08/29 8PM(9)	08/29 10PM(11)	08/30 12AM(13)	08/30 2AM(15)
County	Pinellas	FL	08/29 6PM(7)	08/29 8PM(9)	08/29 11PM(12)	08/30 1AM(14)
County	Polk	FL	08/29 8PM(9)	08/30 1AM(14)	n/a	n/a
County	Putnam	FL	08/30 4AM(17)	08/30 6AM(19)	08/30 8AM(21)	08/30 10AM(23)
County	Sarasota	FL	08/29 6PM(7)	08/29 8PM(9)	n/a	n/a
County	Seminole	FL	08/30 2AM(15)	08/30 5AM(18)	n/a	n/a
County	St. Johns	FL	08/30 5AM(18)	08/30 8AM(21)	08/30 9AM(22)	08/30 1PM(26)
County	St. Lucie	FL	08/29 5PM(6)	08/30 3AM(16)	n/a	n/a
County	Sumter	FL	08/29 10PM(11)	08/30 12AM(13)	08/30 2AM(15)	08/30 4AM(17)
County	Suwannee	FL	08/30 4AM(17)	08/30 5AM(18)	08/30 7AM(20)	08/30 9AM(22)
County	Taylor	FL	08/30 12AM(13)	08/30 2AM(15)	08/30 4AM(17)	08/30 6AM(19)
County	Union	FL	08/30 4AM(17)	08/30 6AM(19)	08/30 9AM(22)	08/30 10AM(23)
County	Volusia	FL	08/30 2AM(15)	08/30 5AM(18)	n/a	n/a
County	Wakulla	FL	08/30 2AM(15)	08/30 4AM(17)	08/30 6AM(19)	08/30 7AM(20)
County	Walton	FL			n/a	n/a
County	Washington	FL	08/29 8PM(9)	08/30 7AM(20)	n/a	n/a



Impact Threat

From the National Weather Service

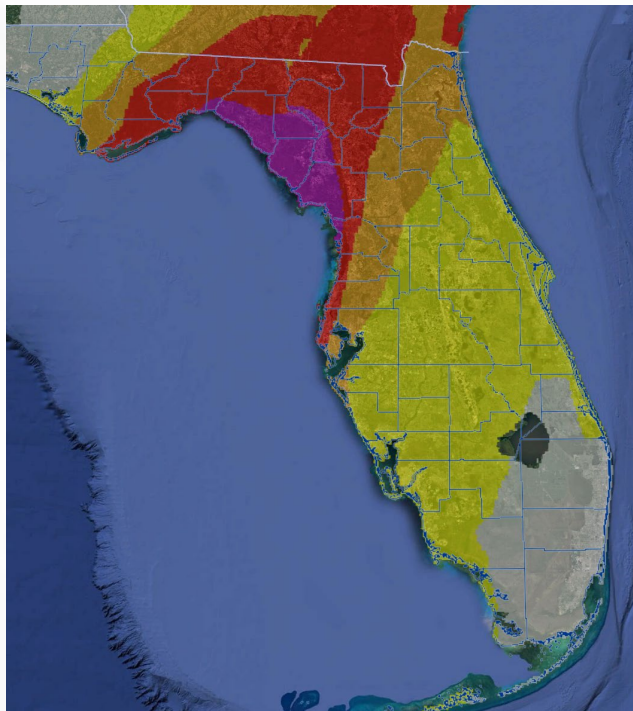
Storm Surge



- *Widespread deep inundation, powerful battering waves.
- *Structural damage to buildings
- *Locations may be uninhabitable for an extended period.
- *Near-shore escape routes and secondary roads washed out or severely flooded.
- *Massive damage to marinas, docks, boardwalks, and piers.
- *Numerous small craft broken away from moorings with many lifted onshore and stranded.

Storm Surge Threat
Potential for storm surge flooding greater than 9 ft above ground
Potential for storm surge flooding greater than 6 ft above ground
Potential for storm surge flooding greater than 3 ft above ground
Potential for storm surge flooding greater than 1 ft above ground
Little to no storm surge flooding

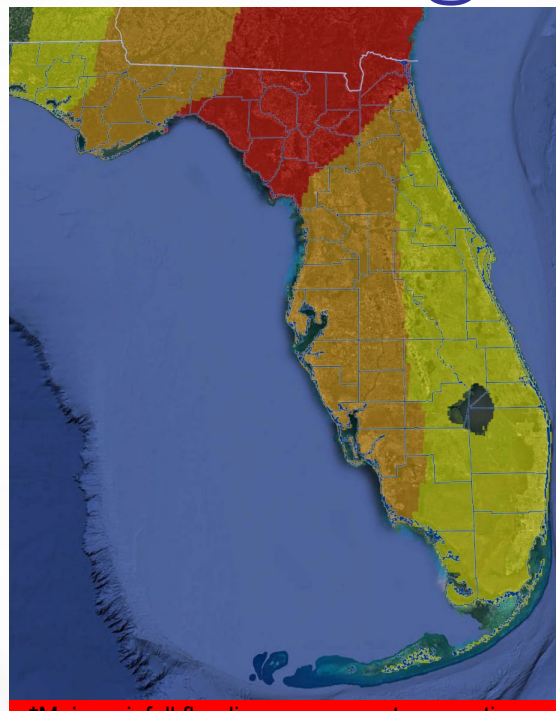
Wind



- *Structural damage to buildings, some with complete roof and wall failures.
- *Complete destruction of mobile homes.
- *Locations may be uninhabitable for weeks or months.
- *Numerous large trees snapped or uprooted.
- *Many roads impassable from large debris,
- *Widespread power and communications outages.

Wind Threat
Potential for wind greater than 110 mph
Potential for wind 74 to 110 mph
Potential for wind 58 to 73 mph
Potential for wind 39 to 57 mph
Wind less than 39 mph

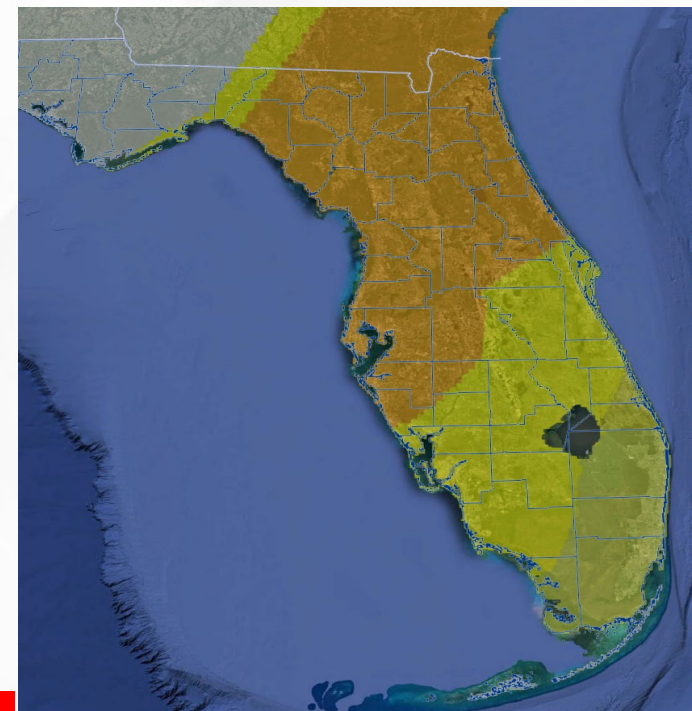
Flooding



- *Major rainfall flooding may prompt evacuations and rescues.
- *Rivers and tributaries may rapidly overflow their banks in multiple places. Small streams, creeks, canals, and ditches may become dangerous rivers.
- *Many road and bridge closures with some weakened or washed out.

Flooding Rain Threat
Potential for extreme flooding rain
Potential for major flooding rain
Potential for moderate flooding rain
Potential for localized flooding rain
Little to no potential for flooding rain

Tornadoes



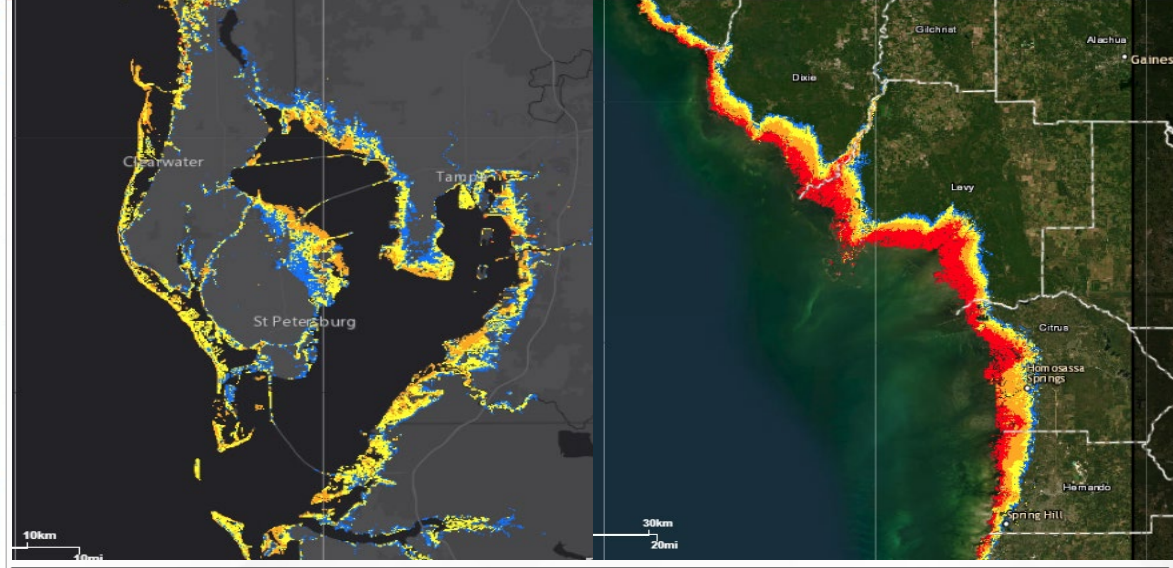
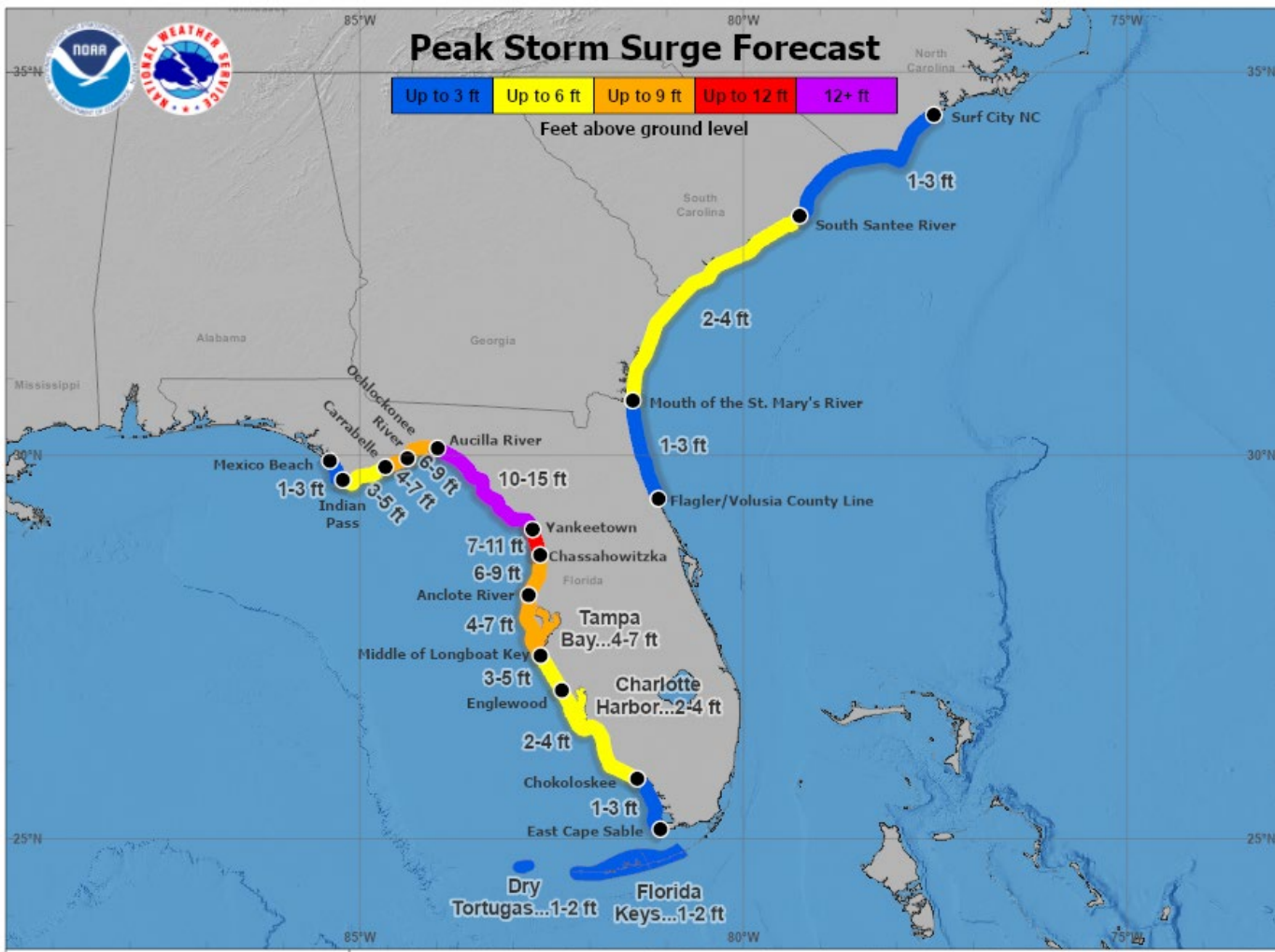
- *Scattered tornadoes can hinder the execution of emergency plans.
- *Spots of considerable damage, power loss, and communications failures.
- *Locations could realize roofs torn off, mobile homes demolished, large trees snapped or uprooted, vehicles tumbled, and boats tossed about.

Tornado Threat
Potential for outbreak of tornadoes
Potential for many tornadoes
Potential for several tornadoes
Potential for a few tornadoes
Tornadoes not expected



Expected Storm Surge Values

From the National Hurricane Center



Peak storm surge will be greatest along the eastern Forgotten Coast and Nature Coast with 10-15' from the Aucilla River to Yankeetown and 7-11' from Yankeetown to Chassahowitzka forecasted. 6-9' is currently expected from the Ocklockonee River to the Aucilla River and from the Chassahowitzka to the Anclote River. 4-7' is forecast for Carrabelle to the Ochlockonee River and from the Aclote River to the Middle of Longboat Key. Storm surge is also forecast along the Florida Gulf Coast from the Middle of Longboat Key to East Cape Sable, along the Big Bend and Panhandle from Carrabelle to Mexico Beach, along the Northeast coast from the Mouth of the St. Mary's River to the Flagler/Volusia County line, and the Florida Keys.

Hurricane Idalia
 Tuesday August 29, 2023
 11 AM EDT Advisory 12
 NWS National Hurricane Center

User Notes: Water levels along the immediate coast could reach the following heights above ground level within the indicated areas. Elevated water levels will likely be accompanied by large and destructive waves. Colors are determined by the highest values in the associated forecast peak surge range. Values shown on this graphic are inclusive of tide.



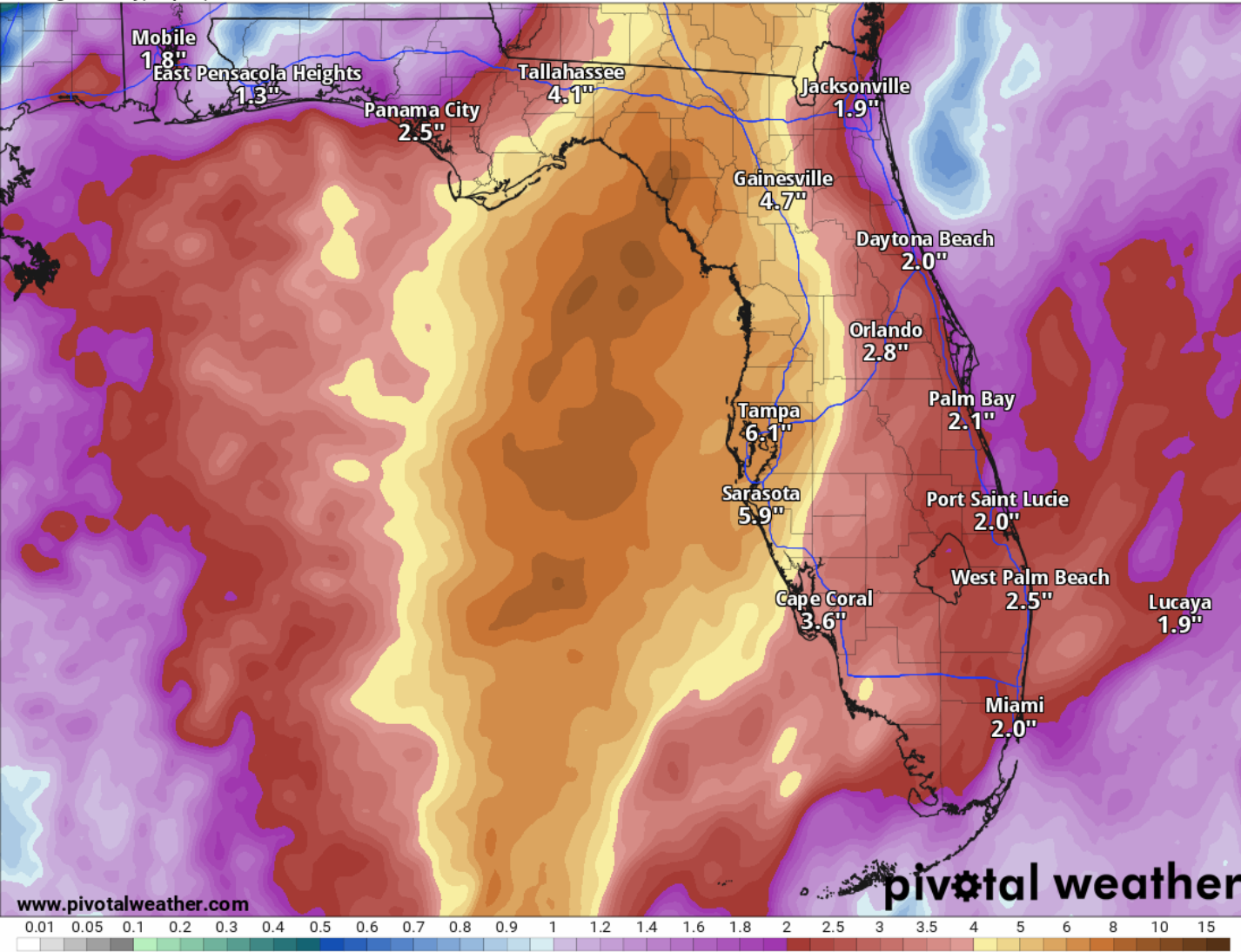
7-Day Forecast Rainfall

From the National Weather Service & Weather Prediction Center

7-Day Precipitation (in)

Ending Tuesday, Sep. 5, 2023 at 8 a.m. EDT

Init: Tue 2023-08-29 12z WPC

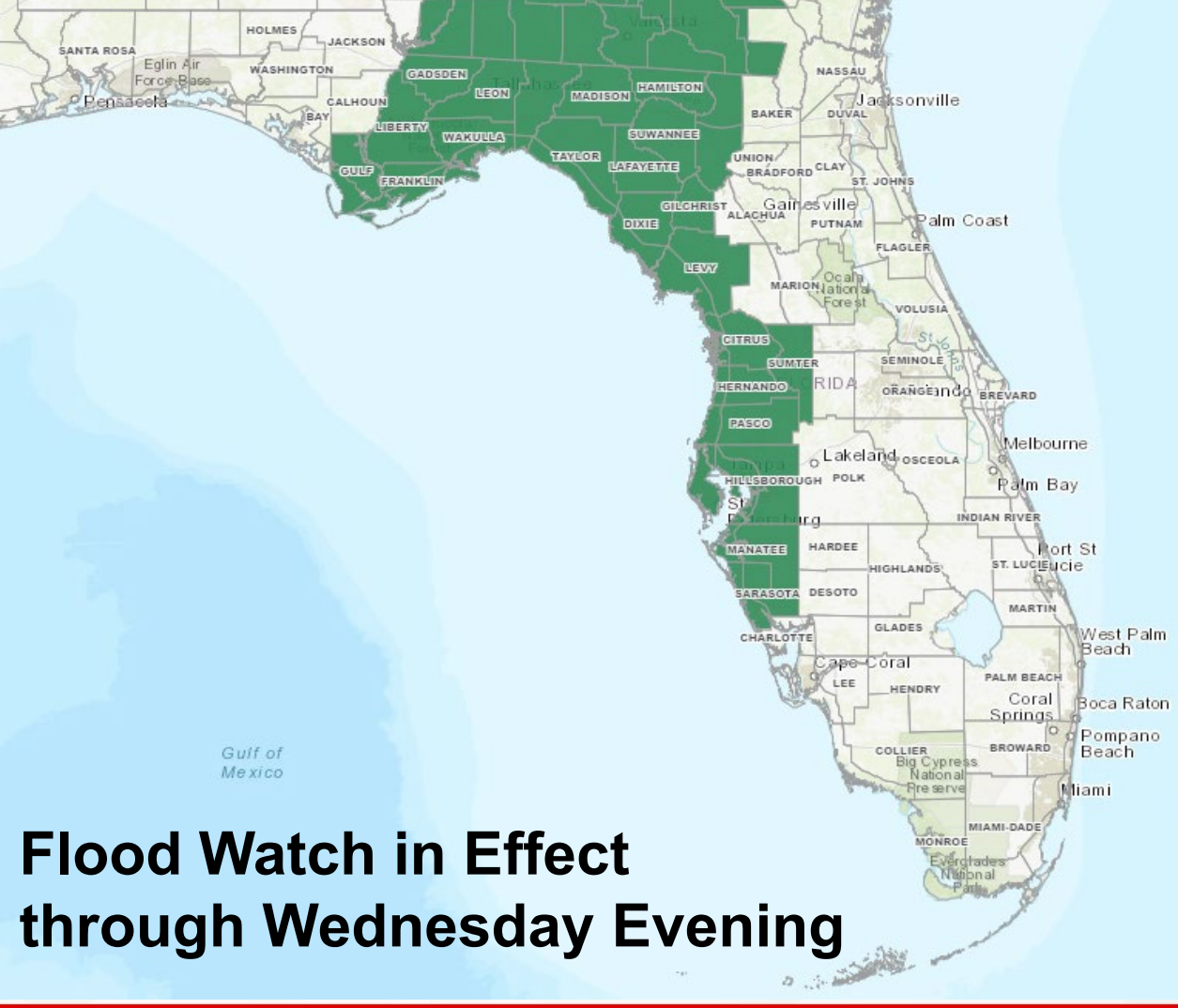
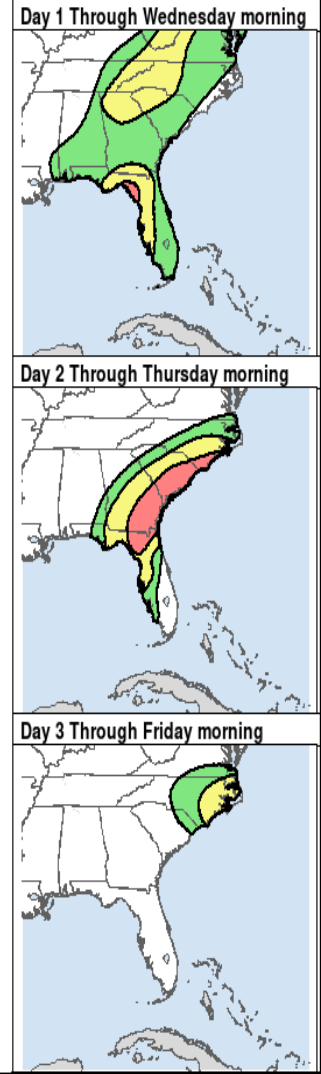
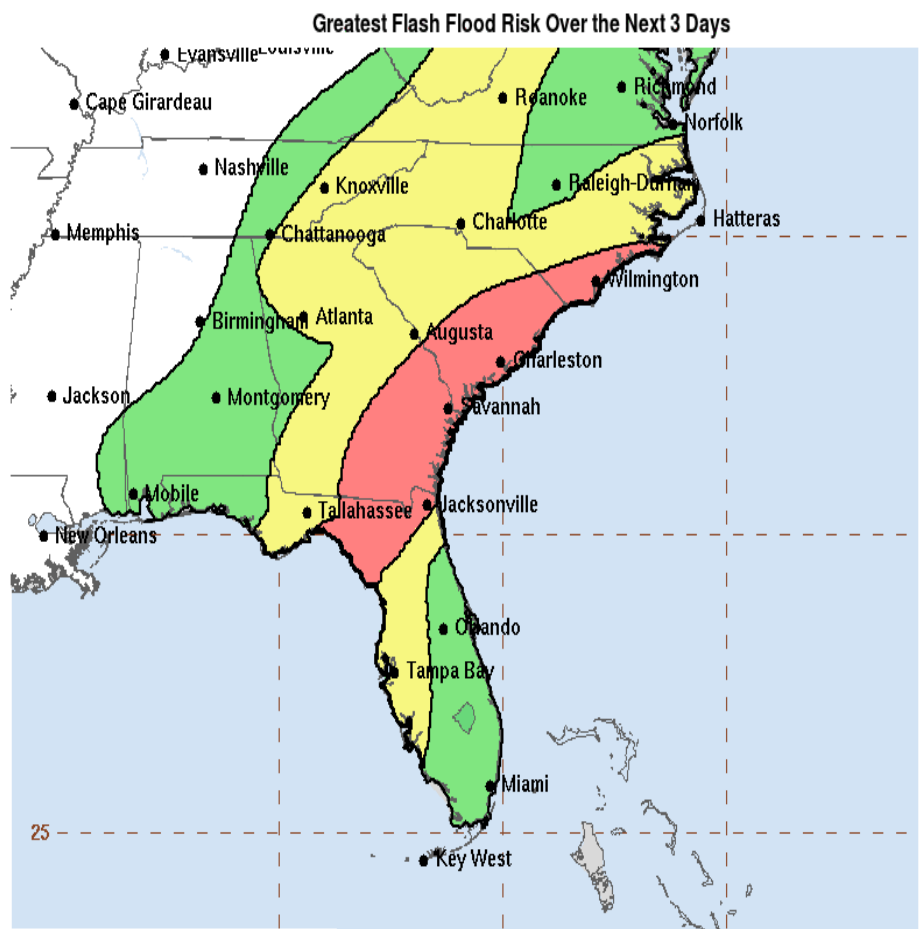


Exact rainfall amounts will be track-dependent, but there is the potential for heavy rainfall amounts of 4-8", with the higher amounts to the right of the track of the system. Isolated locations could receive up to 12" of rain from this system, with coastal portions of the Florida West Coast and Big Bend being the most at risk for these higher amounts.



Flood Outlooks & Watch

From the Weather Prediction Center



Hurricane Idalia
Day 1-3 Excessive Rainfall Outlook
Created 5:08 AM EDT Tue Aug 29 2023
Valid 8:00 AM EDT Tue Aug 29 2023
through 8:00 AM EDT Fri Sep 1 2023
NOAA/NWS/NCEP/WPC

Risk of flash flooding
Marginal: At Least 5% Moderate: At Least 40%
Slight: At Least 15% High: At Least 70%

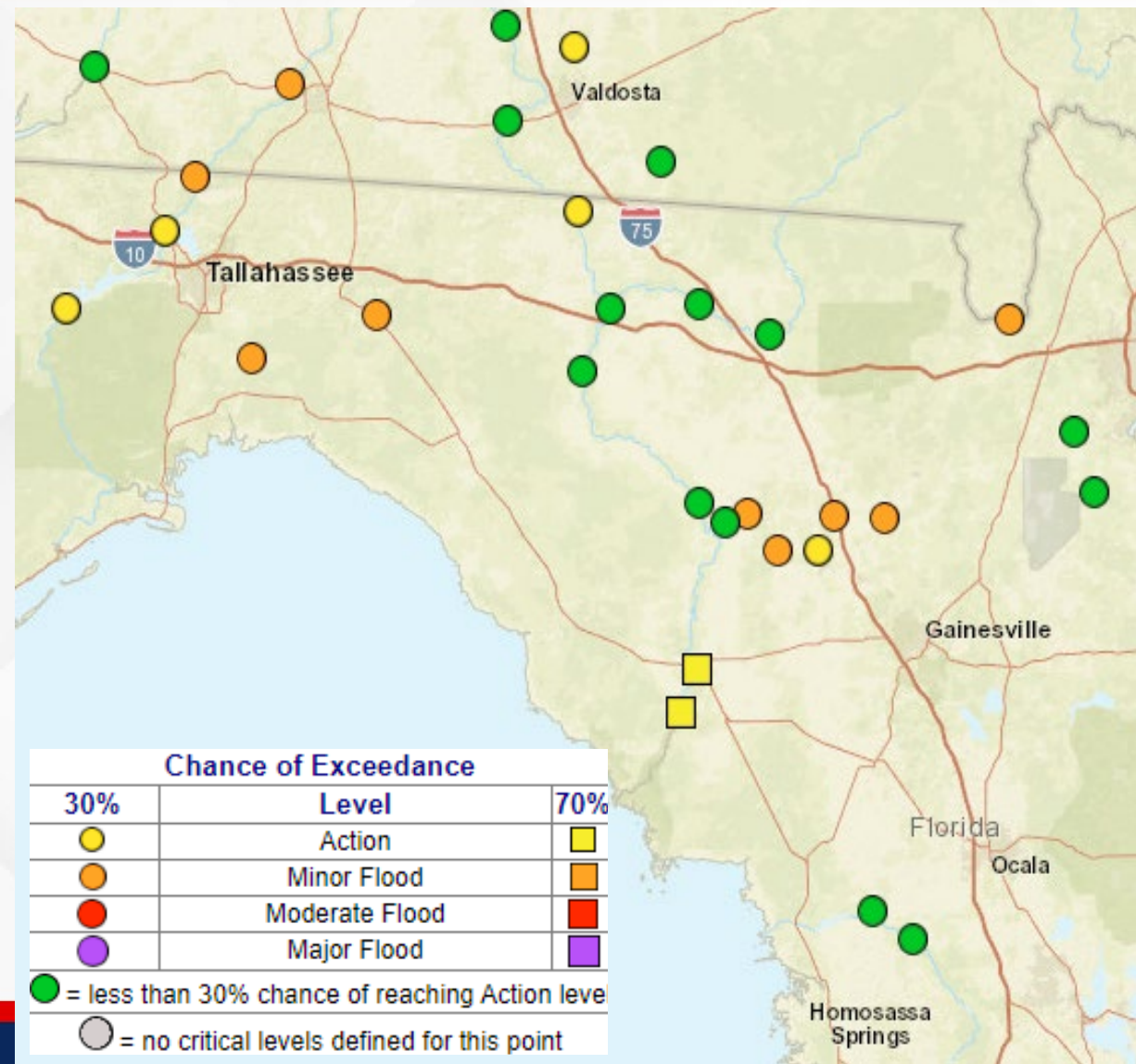


Flood Watch in Effect through Wednesday Evening



Riverine Flooding

From the National Weather Service



Recent dry conditions have kept North Florida and Nature Coast rivers, creeks, and tributaries below flood stage for the last couple of weeks. As Hurricane Idalia continues to push into the eastern Gulf of Mexico and towards the Florida West Coast, several rounds of intense rainfall can be expected. **River Flood Warnings** will go into effect Wednesday afternoon/evening for the [St. Mary's River at Macclenny \(Nassau, Baker\)](#), [Suwannee River near Wilcox \(Gilchrist, Levy and Dixie\)](#), and Thursday morning/afternoon for [Santa Fe River near Worthington Springs](#) and [O'Leno State Park \(Union, Alachua\)](#) as **minor flooding** is forecast. A **River Flood Warning** will go into effect Wednesday morning for [Alafia River at Riverview \(Hillsborough\)](#) as storm surge associated with Idalia is expected to cause **major flooding** on lower portions of the river. Rainfall totals will remain track-dependent, but there remains a greater chance for heavy rainfall to the east of the storm's track.



Severe Weather Outlook – Tues. & Wed.

From the Storm Prediction Center

5 - High

Widespread severe storms expected

4 - Moderate

Widespread severe storms likely

3 - Enhanced

Numerous severe storms possible

2 - Slight

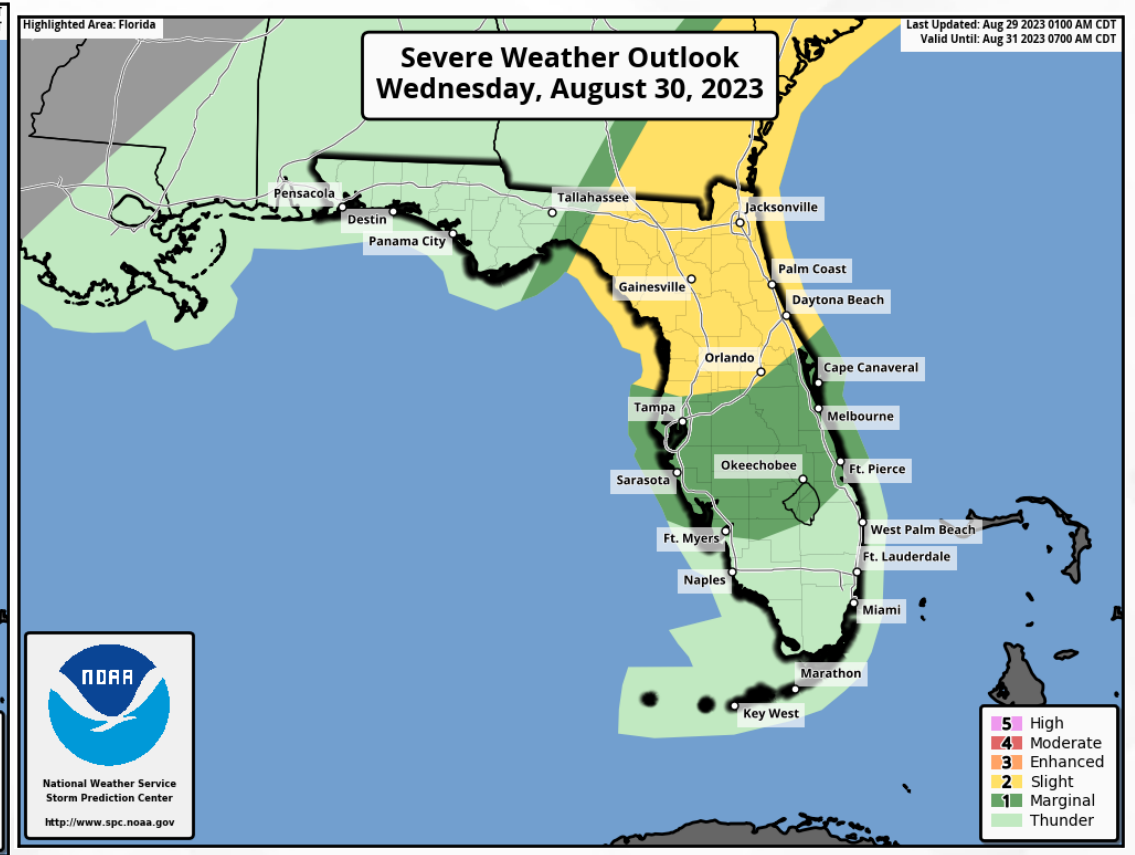
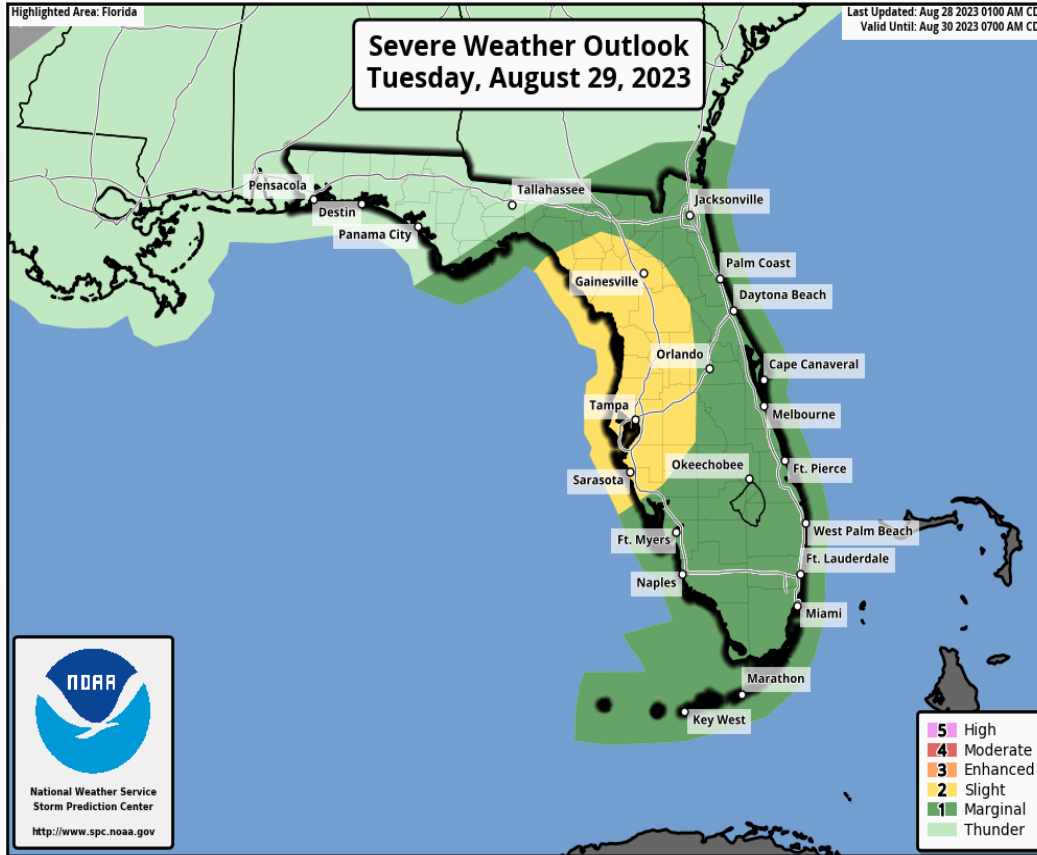
Scattered severe storms possible

1 - Marginal

Isolated severe storms possible

Thunderstorms

No severe storms expected



A **Slight Risk (level 2 of 5) for Severe Weather** can be expected Tuesday night and into Wednesday morning along the Florida Gulf Coast and into West-Central region as isolated tropical tornadoes may be embedded within Idalia's outer bands as the system approaches the Gulf Coast. The **Marginal Risk (level 1 of 5)** expands to include the Big Bend, Northeast Florida, and the entire Peninsula, as well as the Florida Keys on Tuesday. As Idalia continues to push inland on Wednesday, the **Slight Risk (level 2 of 5) for Severe Weather** shifts over the I-75 corridor and Northeast Florida, with a **Marginal Risk (level 1 of 5)** extending along the Big Bend and throughout Central Florida.



Elevated Rip Current Risk

Panhandle & East Coast Beaches



A **high risk for rip currents** can be expected to develop along all Florida beaches today. Deteriorating beach and boating conditions will continue along all Florida West Coast beaches throughout the day. A **moderate to high risk for rip currents** can be expected to continue through Thursday, at least.



Key Messages

Hurricane Idalia



Key Messages for Hurricane Idalia

Advisory 12: 11:00 AM EDT Tue Aug 29, 2023

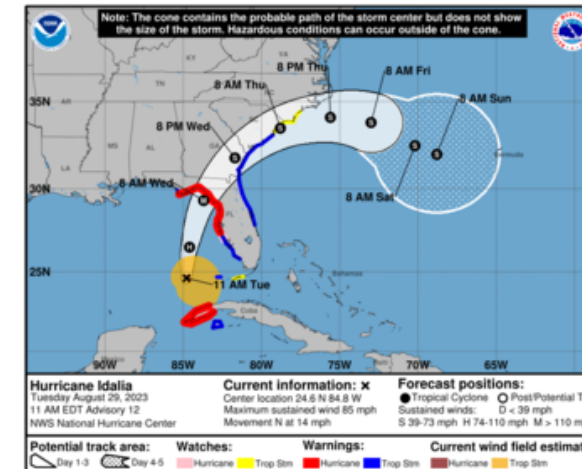
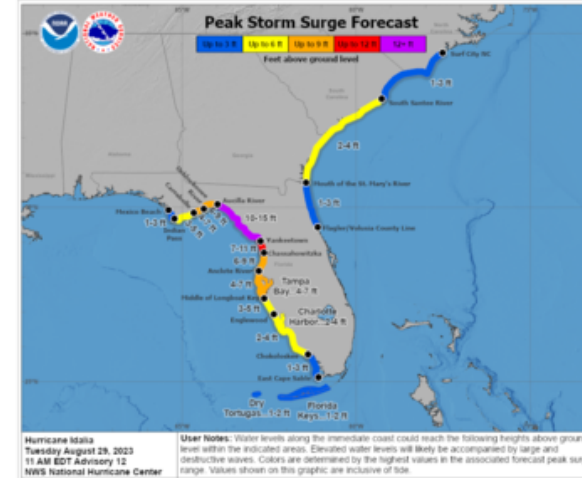


1. Catastrophic impacts from storm surge inundation of 10 to 15 feet above ground level and destructive waves are expected somewhere between Aucilla River and Yankeetown, Florida. Life-threatening storm surge inundation is likely elsewhere along portions of the Florida Gulf Coast where a Storm Surge Warning is in effect. Residents in these areas should follow any advice or evacuation orders given by local officials.

2. There is the potential for destructive life-threatening winds where the core of Idalia moves onshore in the Big Bend region of Florida, with hurricane conditions expected elsewhere in portions of the Hurricane Warning area along the Florida Gulf Coast. Strong winds will also spread inland across portions of northern Florida and southern Georgia near the track of the center of Idalia where Hurricane Warnings are in effect. Residents in these areas should be prepared for long-duration power outages.

3. Areas of flash and urban flooding, some of which may be locally significant, are expected across portions of the west coast of Florida, the Florida Panhandle, and southern Georgia Tuesday into Wednesday, spreading into portions of the eastern Carolinas Wednesday into Thursday.

4. Heavy rainfall from Tropical Storm Idalia is expected across portions western Cuba and may produce areas of flash and urban flooding as well as landslides.



For more information go to hurricanes.gov



Summary

Hurricane Idalia:

- As of 11:00 AM EDT, Idalia was located about 120 miles west of the Dry Tortugas, 275 miles south-southwest of Tampa, and is moving northward at 14 mph. A faster north-northeast motion is expected later today and Wednesday.
- On the forecast track, the center of Idalia is forecast to move over the eastern Gulf of Mexico later, reach the Gulf Coast of Florida within the Hurricane Warning area on Wednesday, and move near the coasts of Georgia and the Carolinas on Thursday.
- Maximum sustained winds have increased to 85 mph, making Idalia a Category 1 hurricane. Rapid intensification is likely through landfall, and Idalia is forecast to become an extremely dangerous major hurricane before landfall on Wednesday.
- Computer models indicate Idalia will continue to strengthen as it moves over the warm waters of the eastern Gulf of Mexico, before making landfall along the Florida Big Bend or Nature Coast Wednesday morning.
- Tropical Storm Watches/Warnings, Hurricane Watches/Warnings, and Storm Surge Watches/Warnings have been continued across the Big Bend, Northeast and West Florida.

The next briefing package will be issued on Tuesday Evening. For the latest information, please visit the National Hurricane Center website.



Summary

Florida Outlook:

- **Hurricane Warning:** Coastal Franklin, Wakulla, Jefferson, Madison, Taylor, Hamilton, Suwanee, Lafayette, Dixie, Columbia, Gilchrist, Levy, Alachua, western Marion, Citrus, Sumter, Hernando, Pasco, Hillsborough, Pinellas, Manatee, Leon, Baker, Bradford, Union
- **Hurricane Watch:** central Marion, Sarasota
- **Tropical Storm Warning:** Gulf, Liberty, Gadsden, Nassau, Duval, Union, Clay, St. Johns, Putnam, Flagler, central Marion, eastern Marion, Volusia, Lake, Seminole, Orange, Brevard, Osceola, Polk, Hardee, Desoto, Sarasota, Charlotte, coastal Collier, Lee, Dry Tortugas
- **Tropical Storm Watch:** Inland Collier and Lower Keys
- **Storm Surge Warning:** Englewood northward (Charlotte/Sarasota border) to Indian Pass (Franklin/Gulf border), including Tampa Bay
- **Storm Surge Watch:** Englewood (Charlotte/Sarasota border) to Chokoloskee (Collier/Monroe border), including Charlotte Harbor
- Tropical storm-force wind probabilities continue to increase along the Florida West Coast, with tropical impacts beginning as early as Tuesday afternoon in Southwest Florida and expanding northward throughout the night.
- The most likely timeframe for deteriorating conditions across the state will be Tuesday overnight from south to north along the Florida Gulf Coast, and early Wednesday morning across Northeast Florida.
- Computer models show Idalia will continue to intensify over the warm eastern Gulf of Mexico waters through landfall, becoming a major hurricane by late Tuesday or Tuesday night.
- Storm surge values reaching 8-12' will be possible from the Aucilla River to Yankeetown, 7-11' from Yankeetown to Chassahowitzka, 6-9' from Chassahowitzka to the Anclote River and from the Aucilla River to the Ochlocknee River, 4-7' from the Anclote River to the Middle of Longboat Key and from the Ochlockonee River to Carrabelle.
- Storm surge will also be possible southward along the Florida Gulf Coast from the Middle of Longboat Keys through East Cape Sable, from Mexico beach to Carrabelle, along the Northeast coast from the Mouth of the St. Mary's River to the Flagler/Volusia County line, and the Florida Keys.
- There is a Slight Risk (level 2 of 5) for Severe Weather along the Florida Big Bend and through West-Central Florida as isolated tropical tornadoes will be possible within Idalia's outer tropical rainbands as the system approaches the Gulf Coast. A Marginal Risk (level 1 of 5) for Severe Weather extends across North Florida and throughout the Peninsula to the Florida Keys.
- The Slight Risk (level 2 of 5) for Severe Weather will then shift inland over the I-75 corridor and Northeast Florida on Wednesday as Idalia continues to push inland through the Suwannee River Valley. The Marginal Risk (level 1 of 5) for Severe Weather continues for the Florida Big Bend and across Central Florida.
- A Moderate Risk (level 3 of 4) for Flash Flooding can be expected on Tuesday along the Big Bend and Nature Coast ahead of tropical moisture pushing northward and Idalia bringing heavy and intense rainfall to the Gulf Coast. The Slight Risk (level 2 of 4) for Flash Flooding extends along North Florida and through Southwest Florida, with a Marginal Risk (level 1 of 4) statewide.
- The Moderate Risk (level 3 of 4) will shift northeastward across the Suwannee River Valley and Northeast Florida as Idalia continues to push inland, and a Slight Risk (level 2 of 4) can be expected along the Big Bend and through West-Central Florida.
- A Flood Watch has been issued along portions of the Big Bend, Nature Coast, and West-Central Florida as Tropical Storm Idalia is expected to bring intense rainfall across the Florida Gulf Coast, which may lead to localized flash flooding.
- River Flood Warnings will go into effect Wednesday afternoon/evening and Thursday morning for multiple Nature Coast and Suwannee River Valley rivers as rainfall associated with Idalia is forecast to rise water levels into minor flood stage. The Alafia River at Riverview is forecast to rise into major flood stage Wednesday morning due to associated storm surge along lower portions of the river.

The next briefing package will be issued on Tuesday Evening. For the latest information, please visit the [National Hurricane Center website](#).



Tropical Update



Created by:

Melissa James, Assistant State Meteorologist

Melissa.James@em.myflorida.com

State Meteorological Support Unit

Florida Division of Emergency Management

Users wishing to subscribe (approval pending) to this distribution list, register at:

https://public.govdelivery.com/accounts/FLDEM/subscriber/new?topic_id=SERT_Met_Tropics.

Other reports available for subscription are available at:

<https://public.govdelivery.com/accounts/FLDEM/subscriber/new?preferences=true>